

DELHI TRANSCO LTD.

STATE LOAD DISPATCH CENTER

PROGRESS REPORT

OCTOBER 2017

S. No.	CONTENTS	Page No.
1.	Salient Features of Delhi Power System	3
2.	Performance of Generating Stations within Delhi	4
3.	Details of Outage of Generating Stations within Delhi	5-17
4.	Allocation of Power to Delhi from unallocated quota of central sector	18
5.	Allocation of Power to Discoms	19
6.	Power Availability Demand Position of Delhi at the time of occurrence of Peak Demand	20
7.	Power Availability Demand Position of Delhi at the time of occurrence of Maximum Un-Restricted Demand	21
8.	Source wise scheduled drawl from grid and Availability within Delhi	22-25
9.	Shedding Details	26-30
10.	Load Curve for the Day of Peak Demand	31
11.	Load Curve for the day of occurrence of Maximum Un-Restricted Demand	32
12.	Load Curve for the day of Maximum Energy Consumed	33
13.	Load Curve for the day of Maximum Un-Restricted Energy Demand	34
14.	Load Duration Curve	35
15.	Frequency Analysis	36
16.	Voltage Profile for significant 220kV Sub-Stations	37
17.	Voltage Profile for significant 400kV Sub-Stations	38-39
18.	Details of Capacitors Installations in Delhi	40-45
19.	Tripping Details of 400/220 KV System in Delhi Power System	46-48
20.	Details of Under frequency Relay operations in Delhi Power System	49

1 **SALIENT FEATURES OF DELHI POWER SYSTEM**

Sr. No.	Features	OCT. 2016	OCT. 2017
1	Effective Generation Capacity within Delhi in MW		
	Rajghat Power House	135	135
	Gas Turbine	270	270
	Pragati Power Corporation Ltd.	330	330
	Badapur Thermal Power Station	705	705
	Rithala GT	108	108
	Bawana	1372	1372
	TOWMCL	16	16
	Total	2936	2936
2	Maximum Unrestricted Demand (MW)	4799	4723
	Date	19.04.16	04.10.17
	Time	15.41.26	15.29.43
3	Peak Demand met (MW)	4797	4723
	Date	19.04.16	04.10.17
	Time	15.41.26	15.29.43
4	Peak Availability (MW)	4754	4672
5	Shortage (-) / Surplus (+) in MW	(-)43	(-) 51
6	Percentage Shortage (-) / Surplus (+)	(-) 0.90	(-) 1.08
7	Maximum Energy Consume in a day (Mus)	102.107	101.667
8	Energy Consumed during the month	2612.594	2637.380
9	Load Shedding in Mus		
A)	Due to Grid Restrictions		
i)	Under Frequency Relay Operations	0.000	0.000
ii)	Manual Load shedding from DTL S/Stns.	0.000	0.000
iii)	Load Shedding due to low frequency / Low Voltage / TTC/ATC Violation		
	NDPL	0.059	0.028
	BRPL	0.934	0.000
	BYPL	0.065	0.000
	NDMC	0.000	0.000
	MES	0.000	0.000
iv)	Due to transmission Constraints in Central Sector	0.000	0.000
	Total due to Grid Restriction	1.058	0.028
B)	Due to Constraints in System in Mus		
	DTL	0.245	0.462
	NDPL	0.100	0.071
	BRPL	1.113	0.371
	BYPL	0.077	0.069
	NDMC	0.000	0.000
	MES	0.000	0.000
	Other Agencies	0.016	0.000
	Total	1.551	0.973
11	Grand Total in Mus	2.609	1.001

2. PERFORMANCE OF GENERATING STATIONS WITHIN DELHI DURING OCTOBER 2017

A) For the month of October 2017

All Figures in MUs

S. No	Stations	Gross Generation	Aux. Consumption	Net Generation	Availability (%)	Backing Down
1.	RPH	0.000	0.244	-0.244	0.000	0.000
2.	GT	60.522	2.189	58.333	83.760	105.085
3.	PPCL	203.391	4.578	198.813	87.410	33.715
4.	BTPS	125.893	12.040	113.853	31.460	30.542
5.	Rithala	0.000	0.062	-0.062	0.000	61.008
6.	Bawana	264.481	9.196	255.285	41.590	156.244
7.	Towmcl	14.955	2.161	12.794	--	--
8.	EDWPCL	2.539	1.041	1.498	--	--
9.	DMSWL	11.781	2.233	9.548	--	--
	TOTAL	683.562	33.744	649.818	--	386.594

B) For the Year 2017-18 (Upto October 2017)

Power Station	Effective Capacity (MW)	Net Generation in MUs for Oct. 2017	Availability (%) for Oct. 2017	PLF (%) for Oct. 2017	Cumulative Generation in MUs upto Oct. 2017 for the year 2017-18	Cumulative Availability in % upto Oct. 2017 for the year 2017-18	Cumulative PLF in % upto Oct. 2017 for the year 2017-18
RPH	135	-0.244	0.000	0.000	-1.746	0.000	-0.08
GT	270	58.333	83.760	29.830	361.504	80.2	26.70
PPCL	330	198.813	87.410	83.250	1060.810	97.79	64.34
BTPS	705	113.853	31.460	24.920	1225.566	54.84	43.80
Rithala	108	-0.062	0.000	89.170	-0.428	0.00	89.17
Bawana	1372	255.285	41.590	26.520	1728.892	74.33	25.66
Towmcl	16	12.794	--	--	81.812	--	--
EDWPCL	--	1.498	--	--	6.985	--	--
DMSWL	--	9.548	--	--	55.295	--	--
TOTAL	2936	649.818	--	--	4518.69	--	--

3 DETAILS OF OUTAGES OF GENERATING STNS. WITHIN DELHI W.E.F. APRIL 2017

RPH

Unit No	Capacity in MW	Outage		Synchronization		Reason of Outage
		Date	Time	Date	Time	
1	67.5	08.05.15	13.40	Contd.		Not in operation due to not meeting pollution norms.

Unit No	Capacity in MW	Outage		Synchronization		Reason of Outage
		Date	Time	Date	Time	
2	67.5	21.05.15	10.20	Contd.		Not in operation due to not meeting pollution norms.

(B) Gas Turbine

Unit No	Capacity in MW	Outage		Synchronization		Reason of Outage
		Date	Time	Date	Time	
1	30	30.4.17	07:00	30.4.17	19:15	Machine stopped to attend Lealakge of Cooling water from CW return line.
		30.4.17	19:15	2.5.17	12:02	After attending the cooling water leakage machine could not be taken on bar due no schedule from SLDC on CC NG.
		2.5.17	23:35	24.5.17	06:57	Machine stopped due to no schedule from SLDC on CC NG
		4.6.17	15:47	4.6.17	17:16	machine tripped with following alarm GAC Electrical protection Trouable , Electrical Trouable Normal shut down and Genarator Exciatation field failure alarm. Processor of DVR found faulty and same was replaced
		7.6.17	09:45	14.6.17	12:51	Machine could not be taken on bar due to no schedule from SLDC on CC NG
		20.6.17	17:26	20.6.17	23:59	Machine tripped on Electrical Trouble Normal shut down and generator electrical protection. The following alarm also appeared on protection panel. Relay P141B operated, Rotor or stator earth fault and 11 KV Bkr gas pressure low.
		23.6.17	23:02	24.6.17	14:05	Machine Stopped due to Low SF-6 Gas Pressure in 11 KV Breaker.
		24.6.17	14:40	26.6.17	19:40	Machine could not be taken on bar due to no schedule from SLDC on CC NG
		2.7.17	09:47	3.7.17	17:14	Stopped due to low demand and high frequency
		13.7.17	18:16	18.7.17	20:22	
		22.7.17	12:16	11.8.17	15:37	Machine stopped due to fire observed in load gear box.
		11.8.17	18:24	11.8.17	21:25	
		12.8.17	00:05	7.9.17	12:00	Stopped due to low demand and high frequency.
		18.9.17	07:55	18.9.17	18:11	Machine tripped on TAD High(155 mm WC)
		22.9.17	11:50	22.9.17	14:30	
		22.9.17	14:30	23.9.17	08:15	Stopped due to low demand and high frequency
		23.9.17	08:15	23.9.17	12:15	Machine not available due to problem in NRV of ACW line.
		23.9.17	12:15	28.9.17	14:58	Stopped due to low demand and high frequency
		4.10.17	14:17	4.10.17	16:45	Machine tripped on LTTH high. There was a problem in cooling water circuit as the LTTH of other machines were also running High.The self cleaning filter of ACW system cleaned circulating water sytem got normalized.
		4.10.17	16:45	6.10.17	10:15	Stopped due to low demand and high frequency.
7.10.17	12:32	8.10.17	12:12			
10.10.17	06:10	10.10.17	09:30			
10.10.17	16:00	12.10.17	08:42			
15.10.17	00:03	17.10.17	09:02			
18.10.17	15:15	28.10.17	09:47			
30.10.17	05:00	30.10.17	08:00	Machine stopped on TAD High as the machine could not sustain on 5 MW load.		
30.10.17	08:00	31.10.17	23:59	Stopped due to low demand and high frequency..		

Unit No	Capacity in MW	Outage		Synchronization		Reason of Outage
		Date	Time	Date	Time	
2	30	4.4.17	00:04	20.4.17	16:50	Machine stopped due to low demand on CCNG from SLDC
		30.4.17	07:00	30.4.17	19:15	Machine stopped to attend Lealakge of Cooling water from CW return line.
		30.4.17	19:15	24.5.17	10:20	After attending the cooling water leakage machine could not be taken on bar due no schedule from SLDC.
		29.5.17	06:12	29.5.17	09:45	Machine tripped while rebooting the Mark-IV system as the machine was operating while R&S controller was inoperative.
		29.5.17	09:45	02.06.17	09:15	Machine cleared from C&I side but SLDC did not allow to un the machine due to low demand in the Grid.
		2.6.17	09:15	2.6.17	20:13	machine could not be taken on bar as mark-IV system was found hanged. Card "HCMA" in <C> communicator and "HXPD" in <R> Controller was found faulty. These cards were replaced. After executing start command Machine came in temperature control mode and speed of machine did not increase after 2850 RPM.
		7.6.17	09:45	13.6.17	14:12	Machine could not be taken on bar due to no schedule from SLDC on CC NG
		13.6.17	14:26	14.6.17	12:27	Machine taken on bar for testing.
		2.7.17	09:47	3.7.17	17:52	Stopped due to low demand and high frequency
		8.7.17	15:25	9.7.17	16:34	Tripped on loss of field on alarm Electrical trouble shutdown.
		10.7.17	10:26	10.7.17	16:45	Tripped on loss of field on alarm Electrical trouble shutdown.
		11.7.17	09:57	11.7.17	17:04	Machine tripped on Electrical Trouble Normal Shut Down and loss of field alarm on protection panel.
		11.7.17	17:10	13.7.17	10:43	Stopped due to low demand and high frequency
		13.7.17	12:35	14.7.17	13:50	Machine tripped on Electrical Trouble Normal Shut Down and loss of field alarm on protection panel.
		14.7.17	13:55	18.7.17	18:29	Stopped due to low demand and high frequency
		18.7.17	20:45	20.7.17	17:50	
		22.7.17	18:59	10.8.17	15:38	
		12.8.17	00:07	7.9.17	14:38	
		18.9.17	07:50	18.9.17	17:46	Stopped due to low demand and high frequency
		23.9.17	08:15	23.9.17	12:15	
23.9.17	12:15	25.9.17	12:49			
25.9.17	16:10	28.9.17	14:38			
4.10.17	15:45	6.10.17	09:52			
7.10.17	12:32	7.10.17	14:24			

Unit No	Capacity in MW	Outage		Synchronization		Reason of Outage
		Date	Time	Date	Time	
3	30	4.4.17	23:58	30.4.17	07:00	Machine stopped due to low demand on CC Spot R-LNG from SLDC
		30.4.17	07:00	30.4.17	19:15	machine was not available due to non availability of cooling water as there was leakage from CW return line for which plant shut down was taken.
		30.4.17	19:15	29.7.17	14:53	Machine could not taken on load due to no schedule from SLDC on CC Spot R-LNG
		29.7.17	15:04	04.8.17	17:10	Machine stopped after taking trial test as there was no schedule from SLDC.
		4.8.17	22:32	5.8.17	16:42	Stopped due to low demand and high frequency
		6.8.17	02:15	7.9.17	11:32	
		7.9.17	15:35	14.9.17	05:36	
		16.9.17	13:22	19.9.17	11:17	
		21.9.17	14:08	21.9.17	16:27	Machine tripped, No alarm appeared but fuel failure alarm came on protection pannel. The Cooling water for Turbine oil cleaning was very dirty and this water was drained after that fresh DM water taken into tank and Machine synchronised.
		22.9.17	12:30	22.9.17	14:30	Machine tripped on TAD High
		22.9.17	14:30	23.9.17	08:15	Stopped due to low demand and high frequency
		23.9.17	08:15	23.9.17	12:11	Machine not available due to problem in NRV of ACW line.
		28.9.17	01:00	29.9.17	08:26	Stopped due to low demand and high frequency
		29.9.17	09:04	4.10.17	09:50	Machine stopped as GT-5 was taken on load as per SLDC requirement of load.
		7.10.17	01:00	8.10.17	08:20	Stopped due to low demand and high frequency
		8.10.17	16:30	9.10.17	12:30	
		9.10.17	20:00	14.10.17	12:25	
		15.10.17	00:06	17.10.17	09:40	
17.10.17	19:01	31.10.17	23:59			

Unit No	Capacity in MW	Outage		Synchronization		Reason of Outage
		Date	Time	Date	Time	
4	30	4.4.17	23:58	30.4.17	07:00	Machine stopped due to low demand on CC Spot R-LNG from SLDC
		30.4.17	07:00	30.4.17	19:15	machine not available due to non availability of cooling water as there was leakage from CW return line for which plant shut down was taken.
		30.4.17	19:15	02.06.17	12:25	Machine stopped due to no schedule from SLDC on CC Spot R-LNG
		2.6.17	12:30	5.6.17	13:30	Stopped due to low demand and high frequency
		5.6.17	13:30	5.6.17	15:50	After giving start command to machine it came on FSNL in due time. While trying to sybchronise its 11 KV breaker not taking Close command inspite all permissive healthy.After checking DVR and Mark-Vie system it was found that closing permissive from protection panel was not available. The problem rectified by Protection department and same was synchronised with Grid.
		6.6.17	22:13	14.9.17	09:28	Machine stopped due to low schedule from SLDC on CC Spot
		17.9.17	15:30	19.9.17	12:43	With heavy jerk in the system and inspecting at local its Y Phase Bus Conductor got snapped and oil is coming from the Bushes of R&Y Phase.
		20.9.17	00:05	23.9.17	08:15	Machine stopped as per SLDC message due to low demand on CCspot.
		23.9.17	08:15	23.9.17	12:15	Machine not available due to problem in NRV of ACW line.
		23.9.17	12:15	25.9.17	15:38	Stopped due to low demand and high frequency
		27.9.17	17:31	27.9.17	19:40	Machine tripped on Electrical Trouble Normal Shut down.
		27.9.17	19:45	13.10.17	11:20	Stopped due to low demand and high frequency
		4.10.17	22:48	5.10.17	01:28	Machine tripped due to communication failed with any IO pack.Loss of flame Tripp alarm appeared.
		5.10.17	01:40	5.10.17	10:48	Stopped due to low demand and high frequency
		7.10.17	01:00	8.10.17	12:00	
		8.10.17	12:00	8.10.17	18:30	Machine taken out from DC due to problem in Field breaker.
		8.10.17	18:35	9.10.17	13:18	Machine cleared from maintenance side but not taken on load due low schedule from SLDC.
		9.10.17	20:00	14.10.17	12:28	Stopped due to low demand and high frequency
		14.10.17	17:20	17.10.17	10:13	
		17.10.17	11:01	17.10.17	13:13	Machine tripped due to communication failed with any IO pack.
17.10.17	19:01	31.10.17	23:59	Stopped due to low demand and high frequency.		

Unit No	Capacity in MW	Outage		Synchronization		Reason of Outage
		Date	Time	Date	Time	
5	30	4.4.17	00:00	25.4.17	18:57	machine taken to Hot Gas Path Inspection & Generator O/h since 25/03/2017
		25.4.17	19:57	30.4.17	07:00	Machine Cleared after synchronizing and running for one hour on 10 MW, 20MW and 30 MW
		30.4.17	07:00	30.4.17	19:15	machine was not available due to non availability of cooling water as there was leakage from CW return line for which plant shut down was taken.
		30.4.17	19:15	1.5.17	07:22	Machine could not taken on load due to no schedule from SLDC on CC Spot R-LNG
		16.5.17	12:40	16.5.17	13:46	Machine tripped on loss of Excitation alongwith Electrical trouble normal shut down alarm on protection panel.
		24.5.17	11:25	05.06.17	17:50	Machine stopped due to no schedule from SLDC on CC NG
		16.6.17	03:46	13.07.17	13:21	Stopped due to low demand and high frequency
		13.7.17	14:41	13.7.17	17:15	Machine tripped on Exhaust over temperature trip alarm.
		14.7.17	18:57	15.7.17	12:25	Tripped on electrical normal shutdown.UAT E/F operated, differential trip, differential R, Differential Y and Overall differential operated
		15.7.17	12:51	15.7.17	16:39	Machine stopped after taking trial and no schedule from SLDC.
		15.7.17	17:22	18.7.17	11:08	Stopped due to low demand and high frequency
		18.7.17	18:50	20.7.17	11:06	Machine stopped due to leakage of water from Warren Pump and less load on machine.
		20.7.17	13:37	22.7.17	18:45	Machine stopped after taking trial and no schedule from SLDC.
		28.7.17	10:42	29.7.17	15:25	Machine tripped on overspeed bolt trip alarm.Over speed bolt trip alarm reset and not taken on bar due to no schedule from SLDC.
		29.7.17	15:34	02.08.17	11:40	Machine stopped after taking trial and no schedule from SLDC.
		5.8.17	20:08	11.8.17	13:45	Stopped due to low demand and high frequency
		22.8.17	18:00	22.8.17	21:03	Machine stopped due to gas pressure low in 11 KV breaker
		26.8.17	12:00	26.8.17	19:50	Stopped due to low demand and high frequency.
		30.8.17	18:33	30.8.17	21:30	Machine stopped due to SF6 Gas pressure low alarm in 11 KV breakers.
		30.8.17	21:30	5.9.17	09:30	Stopped due to low demand and high frequency.
		7.9.17	10:05	7.9.17	10:54	Machine desynchronise to change the relay which got damaged and not permitting increase in load.
		17.9.17	15:30	17.9.17	17:20	With heavy jerk observed in the system GT#5 tripped.
		20.9.17	18:05	23.9.17	08:15	Stopped due to low demand and high frequency..
		23.9.17	08:15	23.9.17	13:59	Machine not available due to problem in NRV of ACW line.
		25.9.17	16:49	29.9.17	09:00	Machine Tripped due to lub oil temp high alarm. After that machine not taken on load due to no demand on OC spot.
		29.9.17	21:12	29.9.17	22:12	Machine tripped on Exhaust temp v.High
		29.9.17	22:52	2.10.17	12:30	Stopped due to low demand and high frequency.
		2.10.17	14:00	3.10.17	22:48	Stopped due to low demand and high frequency..
		4.10.17	02:42	4.10.17	12:42	Machine tripped on high exhaust over temperature.
		4.10.17	14:10	4.10.17	15:15	Machine tripped on LTTH high. There was a problem in cooling water circuit as the LTTH of other machines were also running High.The self cleaning filter of ACW system cleaned circulating water sytem got normalized.
4.10.17	15:15	5.10.17	09:55	Machine cleared from maintenance side but not taken on load due low schedule from SLDC.		
12.10.17	08:14	14.10.17	11:24	Machine tripped due to Exhaust Temp of Very High cleared by maintenance division but not taken on load due to low schedule from SLDC.		
14.10.17	14:32	14.10.17	16:27	Machine tripped on high exhaust temperature.		
14.10.17	17:15	17.10.17	08:57	Stopped due to low demand and high frequency.		
17.10.17	23:01	31.10.17	23:59			

Unit No	Capacity in MW	Outage		Synchronization		Reason of Outage
		Date	Time	Date	Time	
6	30	23.03.17	14:17	30.4.17	07:00	Machine stopped due to low schedule from SLDC on CC spot R-LNG.
		30.4.17	07:00	30.4.17	19:15	machine was not available due to non availability of cooling water as there was leakage from CW return line for which plant shut down was taken.
		30.4.17	19:15	2.5.17	12:45	Machine could not taken on load due to no schedule from SLDC on CC Spot R-LNG
		2.5.17	12:45	2.5.17	22:25	After getting schedule from SLDC, Machine could not be taken on load due to early disengaging of Diesel Engine before 65% of Turbine full rpm.
		7.5.17	00:23	7.5.17	00:47	Machine taken on FSNL to change over from Bus bar BB-1 to BB-3
		22.5.17	15:00	06.06.17	21:21	Machine stopped due to no schedule from SLDC on CC NG
		16.6.17	03:49	13.07.17	15:20	Machine could not be taken on bar due to no schedule from SLDC on CC NG
		20.7.17	20:18	22.7.17	12:12	Stopped due to low demand and high frequency
		27.7.17	02:44	27.7.17	15:35	(i) Communication failed with IO pack
		27.7.17	15:40	28.7.17	11:38	Stopped due to low demand and high frequency
		2.8.17	13:08	6.8.17	02:06	Machine stopped as per SLDC message due to low demand on CCNG.
		10.8.17	13:18	10.8.17	13:29	Machine came on FSNL due to disturbance in Pragati 220 KV I.P Ext Grid.
		26.8.17	03:13	26.8.17	22:22	Stopped due to low demand and high frequency.
		26.8.17	22:53	30.8.17	17:50	
		16.9.17	13:18	17.9.17	17:23	
		22.9.17	10:08	22.9.17	18:00	Machine tripped on TAD High(142 mm WC)
		22.9.17	18:00	23.9.17	08:15	Stopped due to low demand and high frequency
		23.9.17	08:15	23.9.17	12:15	Machine not available due to problem in NRV of ACW line.
		23.9.17	12:15	25.9.17	12:55	Stopped due to low demand and high frequency
		25.9.17	19:02	29.9.17	08:00	
30.9.17	21:00	13.10.17	22:42			
7.10.17	18:00	8.10.17	13:08			
11.10.17	06:10	11.10.17	10:11			
11.10.17	16:00	14.10.17	11:50			
17.10.17	23:01	31.10.17	23:59			

Unit No	Capacity in MW	Outage		Synchronization		Reason of Outage
		Date	Time	Date	Time	
STG-1	30	30.4.17	07:00	30.4.17	19:15	Machine stopped to attend Lealagke of Cooling water from CW return line.
		30.4.17	19:15	2.5.17	15:56	Machine could not taken on load due to no schedule from SLDC on CC Spot R-LNG
		2.5.17	23:35	24.5.17	09:40	Stopped due to low demand and high frequency
		7.6.17	09:45	14.6.17	16:58	
		2.7.17	09:47	3.7.17	17:14	Stopped due to low demand and high frequency
		8.7.17	15:25	8.7.17	17:07	Machine tripped as one of the running machine ,GT#2 tripped on loss of excitation.
		13.7.17	18:16	19.7.17	07:20	Stopped due to low demand and high frequency
		22.7.17	18:55	11.8.17	17:35	
		11.8.17	18:47	11.8.17	19:52	machine tripped on drum level very high alarm due drum level contrnol valve of both circuit of HRSG# 2 not operative.
		12.8.17	00:07	16.8.17	12:45	Stopped due to low demand and high frequency.
		16.8.17	12:45	28.8.17	18:30	STG-1 taken out of DC due to condenser cleaning
		28.8.17	18:30	7.9.17	16:14	Stopped due to low demand and high frequency
		18.9.17	07:10	18.9.17	22:17	Machine stopped due to heavy leakage of DM water from NRV of CPH O/L valve of HRSG#2.
		19.9.17	12:30	19.9.17	13:40	Machine tripped on high Exhaust steam Pr. High. Though all the parameters were normal all of sudden Exhaust steam pressure became high with in the span of 2-3 seconds.
		23.9.17	08:15	23.9.17	12:15	Machine stopped to attend NRV of ACW Return line.
		23.9.17	12:15	27.9.17	17:05	Stopped due to low demand and high frequency
		4.10.17	14:17	4.10.17	16:45	Machine tripped alongwith tripping of GT#1 .
		4.10.17	16:45	6.10.17	12:24	Machine cleared from maintenance side but not taken on load due low schedule from SLDC.
		7.10.17	05:30	7.10.17	08:16	Running BFP tripped on De-aerator level very low as this alarm appeared due to burning of control cable near super heater zone area of drum floor. Also Stand by BFP could not be taken as the start permissive not available.Hence Machine tripped manually.
		7.10.17	12:32	8.10.17	07:00	Machine stopped to attend flue gas leakages at super heater zone area of boiler floor.
8.10.17	07:00	8.10.17	13:34	Machine cleared from maintenance side but not taken on load due low schedule from SLDC.		
8.10.17	14:26	8.10.17	15:40	Machine tripped due to false alarm of turbine overspeed as all the parameter were running normal.		
25.10.17	06:20	25.10.17	09:09	Machine tripped on failure of LT supply to Boiler and turbine MCC board due to tripping of 800 KVA Transformer-I.Buchholtz relay of 800 KVA Transformer-I operated. On further inspection it was found that the oil level indicator was showing the level of oil as above normal but in actual it was below low level.		
28.10.17	08:10	28.10.17	08:32	Machine tripped on low vacume as MS-13 valve closed suddenly.		

Unit No	Capacity in MW	Outage		Synchronization		Reason of Outage
		Date	Time	Date	Time	
STG -2	30	1.4.17	11:39	1.4.17	19:25	Machine stopped to attend hot spot on R-Phase Line Isolator.
		4.4.17	00:00	30.4.17	07:00	Machine stopped due to low demand on CCNG from SLDC
		30.4.17	07:00	30.4.17	19:15	machine was not available due to non availability of cooling water as there was leakage from CW return line for which plant shut down was taken.
		30.4.17	19:15	05.06.17	23:02	Machine could not taken on load due to no schedule from SLDC on CC Spot R-LNG
		6.6.17	22:13	4.8.17	20:32	machine stopped as there was no schedule on CC SPOT.
		4.8.17	20:35	4.8.17	22:05	All of sudden load became zero and machine tripped manually.
		4.8.17	22:20	5.8.17	18:50	machine stopped as local operator informed about heavy steam leakage from MS-114 Valve.
		5.8.17	20:26	10.8.17	15:00	Suddenly machine tripped on multiple alarm on BCD. Alarm s like ESV closed and both boiler trip.
		10.8.17	15:00	26.8.17	03:00	After clearance from C&I machine is available but not taken on load due to low schedule from SLDC.
		26.8.17	03:00	26.8.17	16:45	Machine not available due to work in CW Inlet valve of STG#I.
		26.8.17	16:45	31.8.17	23:59	Machine is available but no schedule from SLDC on CCNG.
		14.9.17	16:07	14.9.17	17:34	machine tripped due to Hot well Level very high. As The running CEP-2A left the load due to choking of suction stainer and stand by CEP-28 was under PTW.
		17.9.17	15:30	19.9.17	13:09	machine tripped due to tripping of GT#4 as the machine was running on single GT.
		21.9.17	14:08	21.9.17	17:42	machine tripped due to tripping of GT#3 as the machine was running on single GT.
		22.9.17	12:30	22.9.17	14:30	machine tripped due to tripping of GT#3 as the machine was running on single GT.
		22.9.17	14:30	23.9.17	08:15	Stopped due to low demand and high frequency
		23.9.17	08:15	23.9.17	14:00	Machine not available due to problem in NRV of ACW line.
		28.9.17	01:00	4.10.17	11:45	Stopped due to low demand and high frequency
		7.10.17	01:00	7.10.17	18:15	Machine stopped as per SLDC message due to low demand on CCNG.
		7.10.17	18:15	8.10.17	07:00	Machine was taken out from DC to attend leakage of cooling water at ACW inlet line of STG#III.
		8.10.17	07:00	8.10.17	12:00	Machine cleared from maintenance side but not taken on load due low schedule from SLDC.
		8.10.17	16:30	9.10.17	14:48	Stopped due to low demand and high frequency
9.10.17	20:00	14.10.17	15:00			
15.10.17	00:06	17.10.17	11:14			
17.10.17	19:01	31.10.17	23:59			

Unit No	Capacity in MW	Outage		Synchronization		Reason of Outage
		Date	Time	Date	Time	
STG -3	30	28.3.17	18:45	24.4.17	18:00	Machine taken for Chemical Cleaning of Condensor
		24.4.17	18:00	30.4.17	07:00	Chemical Cleaning of Condensor completed but machine did not taken on load due to no schedule on CC Spot R-Lng from SLDC
		30.4.17	07:00	30.4.17	19:15	machine was not available due to non availability of cooling water as there was leakage from CW return line for which plant shut down was taken.
		30.4.17	19:15	1.5.15	11:22	Machine could not taken on load due to no schedule from SLDC on CC Spot R-LNG
		7.5.17	08:30	7.5.17	10:47	There was hunting in 24 Volt Charger Out put Voltage which leads to tripping of MCB of DDC panel CRB01,CRB02, CRC01,CRC03 & CJJ02. Due to this Operating parameters were not available at BCD as well as on CRT and subsequently machine tripped on Turbine Ch-I & Ch-II.
		24.5.17	11:25	01.06.17	13:15	Machine stopped as there was no schedule on CCNG
		1.6.17	13:00	5.6.17	13:15	Machine taken under PTW to attend leakage of steam from Main Steam Turbine Control valve.
		5.6.17	13:15	5.6.17	19:55	As per SLDC msg Machine taken on Bar.
		5.6.17	20:26	5.6.17	21:16	Machine tripped on Turbine RJB Vibration V.High
		11.6.17	12:37	11.6.17	14:59	Machine tripped on Turbine channel-1 & 2 operated.
		15.6.17	11:39	15.6.17	12:52	Machine tripped on Turbine channel-1 & 2 operated.
		16.6.17	03:49	13.07.17	17:22	Machine could not be taken on bar due to no schedule from SLDC on CC NG
		20.7.17	20:18	22.7.17	14:03	Stopped due to low demand and high frequency
		27.7.17	02:44	27.7.17	05:52	Machine tripped on Very High Drum level as the Drum level of HRSG# 5 could not be controlled . The other HRSG was tripped due to tripping of GT#6.
		28.7.17	10:42	28.7.17	12:42	Machine tripped as running Machine GT # 5 tripped on overspeed bolt alarm.
		28.7.17	19:18	28.7.17	20:06	Machine Tripped on Drum Level High
		28.7.17	20:54	28.7.17	22:21	Machine Tripped on Class A Trip relay operated
		5.8.17	20:08	6.8.17	04:00	Stopped due to low demand and high frequency.
		10.8.17	13:18	10.8.17	14:18	Machine tripped due to disturbance in Pragati 220 KV I.P Ext Grid.
		17.8.17	23:28	18.8.17	03:38	Machine tripped on exhaust pressure very high. Vaccum stars decreasing slowly and machine tripped when the value og vaccum was -0.78 Kg/Cm2. Both high and very high alarm appeared same time.
		20.8.17	07:10	20.8.17	11:10	Machine tripped due to Turbine Ch-1 & Ch-2 operated, Diff. expansion V.High and V.high, Turbine Brg. Temp and Generator bearing temp v.high alarm also appeared on BCD pannel. It was found that BK card failed and same was replaced.
		26.8.17	03:11	26.8.17	21:15	Machine stopped to attend CW Inlet Valve of STG #I.
		16.9.17	02:18	16.9.17	13:04	Machine stopped as the Generator winding tempertaure of Machine became high due to problem in cooling water.
		17.9.17	15:30	17.9.17	19:51	Machine tripped as there was disturbance in the yard due to snapping of Y phase bus conductor of GT#4.
		18.9.17	18:49	18.9.17	19:38	machine tripped with Turbine Ch-I & II operated.
		20.9.17	17:30	20.9.17	21:06	Machine stopped as the Generator winding tempertaure of Machine became high due to problem in cooling water.It is suspected that the seat of NRV of O/L valve in ACW line is in stucked position..
		22.9.17	10:08	22.9.17	18:00	Machine tripped on due to tripping of GT#6 on high TAD as the machine was running on single boiler.
		22.9.17	18:00	23.9.17	08:15	Stopped due to low demand and high frequency
		23.9.17	08:15	23.9.17	12:15	Machine not available due to problem in NRV of ACW line.
		23.9.17	12:15	23.9.17	16:13	Stopped due to low demand and high frequency
		25.9.17	18:10	27.9.17	23:30	Machine stopped due to lube oil temp very high (75 to 80 degree C).
		27.9.17	23:30	28.9.17	23:59	Stopped due to low demand and high frequency
30.9.17	21:00	4.10.17	01:14			
7.10.17	17:30	8.10.17	09:55	Machine stopped due to heavy leakage from ACW inlet line of STG# III.		
10.10.17	02:25	10.10.17	03:40	Machine tripped on Drum level low.		
12.10.17	08:14	14.10.17	13:05	Machine tripped due to tipping of GT#5 as the machine was running on single GT.but not taken on load due to low schedule from SLDC.		
17.10.17	23:01	31.10.17	23:59	Stopped due to low demand and high frequency		

(C) PRAGATI

Unit No	Capacity in MW	Outage		Synchronization		Reason of Outage
		Date	Time	Date	Time	
1	104	17.02.17	12.10	01.04.17	11.36	Unit tripped due to internal fault
		18.04.17	15.35	20.04.17	19.47	GT#2 swapped by GT#1 and started after getting schedule.
		27.04.17	00.39	02.06.17	12.36	Stopped due to low demand and high frequency
		02.06.17	19.34	05.06.17	14.20	
		07.06.17	10.34	13.06.17	15.49	
		16.06.17	07.27	17.06.17	09.51	
		20.06.17	11.08	11.07.17	17.48	
		11.07.17	16.17	27.07.17	11.26	
		07.08.17	12.03	11.08.17	12.33	Unit tripped due to internal fault
		14.08.17	07.37	14.08.17	12.12	
		15.08.17	16.46	15.08.17	21.30	Gt#1 remain stopped due to no schedule and started after getting schedule.
		15.08.17	21.30	16.08.17	11.03	
		22.08.17	11.24	22.08.17	12.09	Unit tripped due to internal fault
		24.09.17	20.20	25.09.17	11.00	Unit stopped to attend hot spot
25.09.17	11.00	25.09.17	12.44	Stopped due to low demand and high frequency		

Unit No	Capacity in MW	Outage		Synchronization		Reason of Outage
		Date	Time	Date	Time	
2	104	01.04.17	13.14	06.04.17	09.00	GT#2 swapped by GT#1
		06.04.17	09.00	06.04.17	19.00	GT#2 was unavailable for Planned Maintenance
		06.04.17	19.00	18.04.17	14.05	Stopped due to low demand and high frequency
		17.06.17	09.01	17.06.17	12.00	Stopped due to internal fault.
		17.06.17	12.00	21.06.17	05.40	Stopped due to low demand and high frequency
		01.08.17	08.58	01.08.17	11.15	Tripped due to as pressure low
		01.08.17	13.47	01.08.17	18.10	Unit tripped due to internal fault
		08.08.17	07.08	08.08.17	08.25	
		08.09.17	12.29	08.09.17	13.49	Unit tripped due to grid disturbance
		23.09.17	11.27	24.09.17	20.56	Stopped due to low demand and high frequency
		31.10.17	14.00	31.10.17	23.59	Stopped for planned inspection.

Unit No	Capacity in MW	Outage		Synchronization		Reason of Outage
		Date	Time	Date	Time	
STG	122	24.04.17	09.33	27.04.17	10.49	STG tripped on internal fault.
		24.05.17	10.38	24.05.17	12.12	
		17.06.17	09.03	17.06.17	11.18	Desynchronized as G.T.-2 tripped on internal fault.
		20.06.17	11.08	21.06.17	08.45	Stopped due to low demand and high frequency
		08.08.17	07.08	08.08.17	09.50	Unit tripped due to internal fault
		25.08.17	17.23	25.08.17	18.54	Unit stopped to attend internal fault
		08.09.17	12.29	08.09.17	13.55	Unit tripped due to grid disturbance
		11.09.17	05.26	11.09.17	09.15	Unit stopped to attend hot spot
		14.10.17	08.48	14.10.17	11.02	Unit tripped due to internal fault
		15.10.17	08.52	15.10.17	13.18	Unit tripped due to internal fault
16.10.17	05.34	16.10.17	10.14	Unit tripped due to internal fault		

(D) BADARPUR THERMAL POWER STATION

Unit	Capacity in MW	Outage		Synchronization		Reason of Outage
		Date	Time	Date	Time	
1	95	20.11.14	00.00	31.10.17	23.59	Not in operation due to not meeting pollution norms.

Unit	Capacity in MW	Outage		Synchronization		Reason of Outage
		Date	Time	Date	Time	
2	95	24.09.15	19.52	31.10.17	23.59	Not in operation due to not meeting pollution norms.

Unit	Capacity in MW	Outage		Synchronization		Reason of Outage
		Date	Time	Date	Time	
3	95	09.10.15	01.00	31.10.17	23.59	Not in operation due to not meeting pollution norms.

Unit	Capacity in MW	Outage		Synchronization		Reason of Outage
		Date	Time	Date	Time	
4	210	04.04.17	05.17	17.04.17	07.13	Stopped due to low demand and high frequency
		29.04.17	10.37	29.04.17	12.42	Generator protection
		06.05.17	18.08	06.05.17	22.49	Hot spot on GT Bushing
		31.05.17	14.00	05.06.17	07.31	Stopped due to low demand and high frequency
		23.06.17	21.27	25.06.17	10.45	Stopped due to water wall leakage BTL.
		25.06.17	10.45	26.06.17	05.20	AVR excitation problem.
		07.07.17	18.12	08.07.17	20.10	Water wall leakage
		10.08.17	03.17	10.08.17	06.38	UTT/ST Problem.
		05.09.17	00.30	05.09.17	22.15	Water wall tube leakage
		12.09.17	17.13	14.09.17	09.55	Reheater tube leakage
		19.09.17	16.52	20.09.17	14.57	Wall wall tube leakage
		24.09.17	09.39	27.09.17	08.56	Stopped due to low demand and high frequency
16.10.17	23.47	31.10.17	23.59	Stopped by DPCC due to not meeting pollution norms Stopped by DPCC		

Unit	Capacity in MW	Outage		Synchronization		Reason of Outage
		Date	Time	Date	Time	
5	210	21.12.16	00.00	04.04.17	01.39	Stopped due to low demand and high frequency
		13.05.17	14.44	14.05.17	00.05	PA Fan 5A motor shaft shared
		14.05.17	00.06	14.05.17	05.34	Generation excitation low
		27.05.17	19.15	28.05.17	11.30	
		28.05.17	11.30	29.05.17	07.36	
		29.06.17	19.56	03.07.17	10.38	Stopped due to low demand and high frequency
		16.10.17	23.24	31.10.17	23.59	Stopped by DPCC due to not meeting pollution norms Stopped by DPCC

(E) BAWANA CCGT POWER STATION

Unit	Capacity in MW	Outage		Synchronization		Reason of Outage
		Date	Time	Date	Time	
1	216	07.02.17	19:20	09.05.17	15:32	low or No scheduling of Bawana. (Trial Run)
		09.05.17	16:47	10.05.17	4:30	low or No scheduling of Bawana. (Trial Run)
		10.05.17	13:21	12.05.17	5:40	Stopped due to low demand and high frequency
		21.05.17	16:48	21.05.17	18:30	Black Out (Grid Restore@ 18:30 hrs.)
		21.05.17	18:30	24.05.17	10:18	
		31.05.17	20:15	16.06.17	16:50	
		16.06.17	00:00	16.06.17	16:50	
		17.06.17	19:30	17.06.17	7:41	Stopped due to low demand and high frequency
		19.06.17	17:39	19.06.17	8:11	
		23.06.17	19:01	23.06.17	8:05	
		25.06.17	12:35	25.06.17	6:54	
		06.08.17	12.32	06.08.17	14.44	Due to some maintenance work unit was taken out.
		07.08.17	12.39	07.08.17	14.27	Mixing of 220V AC & 110 DC.
		19.08.17	17.40	24.08.17	08.23	low or No scheduling of Bawana .
		25.09.17	11.04	07.10.17	15.00	Stopped due to internal fault
07.10.17	15.00	07.10.17	21.09	Stopped due to low demand and high frequency		

Unit	Capacity in MW	Outage		Synchronization		Reason of Outage
		Date	Time	Date	Time	
2	216	08.12.16	06.35	31.05.17	16.52	Stopped due to low demand and high frequency
		03.06.17	12.04	05.07.17	13.47	
		23.07.17	13.57	24.07.17	16.19	
		04.08.17	11.30	04.08.17	18.30	Tripped due to internal fault
		07.08.17	12.41	08.08.17	10.43	Stopped due to low demand and high frequency
		29.08.17	12.00	29.08.17	23.59	
		01.09.17	00.00	31.10.17	23.59	Upgradation and overhauling of generator.

Unit	Capacity in MW	Outage		Synchronization		Reason of Outage
		Date	Time	Date	Time	
STG-1	254	07.02.17	19.24	09.05.17	18:00	Minor Overhauling.(DC introduced w.e.f.18:00 hrs.)
		09.05.17	18:00	12.05.17	15:19	Stopped due to low demand and high frequency
		21.05.17	16:48	21.05.17	18:30	Black Out (Grid Restore@18:30 hrs.)
		21.05.17	18:30	24.05.17	9:01	Turbine Roter mtc.
		24.05.17	9:01	24.05.17	16:13	Stopped due to low demand and high frequency
		26.05.17	2:35	26.05.17	3:27	Due to AVR trouble alarm, Master relay operated and caused Generator Circuit Breaker of STG#1 to open. "Load shed detected" appeared in alarm list.
		31.05.17	5:13	31.05.17	7:26	Due to AVR trouble alarm, Master relay operated and caused Generator Circuit Breaker of STG#1 to open. "Load shed detected" appeared in alarm list. Malfunction of one Digital Input card which generates this signal was suspected.
		31.05.17	13:25	31.05.17	16:30	Due to AVR trouble alarm, Master relay operated and caused Generator Circuit Breaker of STG#1 to open. "Load shed detected" appeared in alarm list. Malfunctioning of OverVoltage Relay circuit generated this AVR Trouble alarm which caused Master Relay to operate.
		03.06.17	12.04	19.06.17	14.05	Stopped due to low demand and high frequency
		19.06.17	18.55	25.06.17	12.32	
		07.08.17	00.00	07.08.17	19.58	Mixing of 220V AC and 110V DC.
		25.09.17	11.16	28.09.17	19.30	Stopped due to internal fault
		28.09.17	19.30	07.10.17	15.00	Stopped due to non availability of G.T.-I & II
		07.10.17	15.00	08.10.17	07.48	Stopped due to low demand and high frequency

Unit	Capacity in MW	Outage		Synchronization		Reason of Outage
		Date	Time	Date	Time	
3	216	15.04.17	16.06	03.05.17	16.55	Stopped due to low demand and high frequency
		04.05.17	00.12	04.05.17	02.32	When lead selection was given to AOP-2, as per logic, AOP-1 stopped. But Pr. Transmitter sensed a dip in the lube oil pressure causing tripping of GT#3. AOP-1 came back in service with a time delay of 4 sec after command from Mark-VI.
		06.05.17	00.15	13.06.17	17.07	Stopped due to low demand and high frequency
		13.06.17	20.30	06.09.17	11.47	
		06.09.17	23.16	12.09.17	08.00	
		12.09.17	08.00	04.10.17	10.30	
		04.10.17	10.30	13.10.17	24.00	Unit tripped on internal fault.
		14.10.17	10.15	15.10.17	09.30	
15.10.17	09.30	31.10.17	23.59	Stopped due to low demand and high frequency		

Unit	Capacity in MW	Outage		Synchronization		Reason of Outage
		Date	Time	Date	Time	
4	216	01.04.17	11.25	24.05.17	05.23	Stopped due to low demand and high frequency
		24.05.17	14.16	03.06.17	18.26	
		06.06.17	17.35	06.06.17	22.06	Due to Burning of PT circuit wire caused unbalance of voltage in relay thereby resulting in Stator Earth Fault.
		13.06.17	14.42	13.06.17	19.23	It was suspected that probably a mixing of AC & DC signals occurred instantaneously in the DDC panel (CRE 43 & 44) which controls the operations of all the Breakers from the remote (ECP/ OWS System), without any process command which resulted in instantaneous Trip command to Breakers.
		25.06.17	13.32	19.08.17	06.17	Due to changeover the machine.
		06.09.17	23.59	13.09.17	09.52	Stopped due to low demand and high frequency
		18.09.17	15.29	18.09.17	18.24	Due to earth rotar fault
		22.09.17	22.04	27.09.17	08.31	
		01.10.17	00.00	15.10.17	24.00	Stopped due to low demand and high frequency
		16.10.17	00.00	29.10.17	16.30	Unit tripped on internal fault.
		29.10.17	16.30	31.10.17	23.59	Stopped due to low demand and high frequency

Unit	Capacity in MW	Outage		Synchronization		Reason of Outage
		Date	Time	Date	Time	
STG-2	254	03.05.17	17.40	03.05.17	19.05	While checking the operation of LPBP of HRSG-3 inadvertently the CV got fully opened causing condenser vacuum to drop rapidly and STG-2 tripped on Low Condenser Vacuum
		12.05.17	17.30	04.06.17	00.14	Stopped due to low demand and high frequency
		04.06.17	14.38	04.06.17	17.00	Malfunction of DVR system apprehended which caused Field Breaker to open. The probable reason which would have caused this problem was the high ambient temperature inside the Thyristor Panel Room.
		04.06.17	18.39	04.06.17	21.34	Again Malfunction of DVR system apprehended which caused Field Breaker to open. The probable reason which would have caused this problem was the high ambient temperature inside the Thyristor Panel Room.
		06.06.17	17.35	07.06.17	01.18	Burning of PT circuit wire caused unbalance of voltage in relay thereby resulting in Stator Earth Fault.
		25.06.17	13.37	19.08.17	17.09	Stopped due to low demand and high frequency
		28.08.17	11.40	28.08.17	13.09	Tripped due to internal fault
		06.09.17	20.26	28.09.17	18.57	Stopped due to internal fault
		01.10.17	00.05	01.10.17	02.12	Tripped on low vacuum.
		08.10.17	00.09	31.10.17	23.59	Tripped on internal fault.

(F) RITHALA POWER STATION

Unit	Capacity in MW	Outage		Synchronization		Reason of Outage
		Date	Time	Date	Time	
1	31.8	19.03.13	17:32	31.10.17	23.59	Stopped due to low demand and high frequency

Unit	Capacity in MW	Outage		Synchronization		Reason of Outage
		Date	Time	Date	Time	
2	31.8	07.06.13	22:41	31.10.17	23.59	Stopped due to low demand and high frequency

Unit	Capacity in MW	Outage		Synchronization		Reason of Outage
		Date	Time	Date	Time	
STG	31.8	07.06.13	22:38	31.10.17	23.59	Stopped due to low demand and high frequency

4 ALLOCATION OF POWER TO DELHI

A) Time block 00.00hrs. to 24.00hrs. @ 0% allocation from Unallocated Quota from 01.04.2017

Name of the Stn	Installed capacity	Total Un-allocated	Basic Allocation	Basic Allocation at periphery	Allocation out of Unallocated Quota	Allocation out of Un-allocation Quota at Delhi periphery	Total allocation at Delhi periphery
1	2	3	4	5	6	7	(8)=(5)+(7)
NTPC STATIONS							
Singrauli STPS	2000	300	150	130	0	0	130
Rihand-I	1000	150	100	87	0	0	87
Rihand Stage -II	1000	150	126	109	0	0	109
Rihand Stage -III	1000	150	132	115	0	0	115
ANTA GPS	419	63	44	41	0	0	41
Auriya GPS	663.36	99	72	67	0	0	67
Dadri GPS	829.78	129	91	85	0	0	85
Dadri NCTPS (Th)	840	0	756	657	0	0	657
Dadri NCTPS (Th) Stage-II	980	147	735	639	0	0	639
Unchahaar-I TPS	420	20	24	21	0	0	21
Unchahaar-II TPS	420	63	47	41	0	0	41
Unchahaar-III TPS	210	31	29	25	0	0	25
TOTAL	9782	1302	2306	2016	0	0	2016
NHPC							
Baira Suil HPS	180	0	20	19	0	0	19
Salal HPS	690	0	80	76	0	0	76
Tanakpur HEP	94	0	12	11	0	0	11
Chamera HEP	540	0	43	41	0	0	41
Chamera-II HEP	300	54	40	38	0	0	38
Chamera-III HEP	231	35	29	28	0	0	28
URI-I HEP	480	0	53	50	0	0	50
URI-II HEP	240	0	32	31	0	0	31
Sewa HEP	120	18	16	15	0	0	15
Dhaulti Ganga HEP	280	42	37	35	0	0	35
Dulhasti HEP	390	58	50	48	0	0	48
Parbati-III HEP	520	66	66	63	0	0	63
TOTAL	4065	272	479	455	0	0	455
NPC							
Narora APS	440	64	47	41	0	0	41
RAPP (C)	440	64	56	49	0	0	49
TOTAL	880	128	103	89	0	0	89
SJVNL							
Nathpa Jhakri HEP	1500	149	142	135	0	0	135
THDC							
Tehri Hydro	1000	99	63	60	0	0	60
Koteshwar HEP	400	40	39	37	0	0	37
TOTAL	1400	139	102	97	0	0	97
Total	17627	1990	3132	2793	0	0	2793
Allocation from ER and Tala HEP							
Farakka	1600	0	22	19	0	0	19
Kahalgaon	840	0	51	43	0	0	43
Talchar	1000	0	0	0	0	0	0
Tala HEP	1020	153	30	25	0	0	25
Kahalgaon-II	1500	0	157	131	0	0	131
Total ER	5960	153	261	217	0	0	217
Joint Venture							
Jhajjar TPS	1500	114	693	622	0	0	622
Ultra Mega Projects							
Sasan	3960	0	446	400	0	0	400
Grand Total	29047	2257	4531	4032	0	0	4032

5 ALLOCATION OF POWER TO DISCOMS

A) ALLOCATION OF POWER TO VARIOUS LICENCEES AS PER ORDER OF DERC AND DECISION OF GNCTD FOR ALLOCATION OF CENTRAL SECTOR STATIONS (DADRI THERMAL & BTPS) AND STATE SECTOR GENERATING STATIONS w.e.f. 06.08.2013.

(Allocation In %)

(A) 10.00hrs. to 17.00hrs.

SOURCES	LICENSEES					
	NDMC	MES	NDPL	BRPL	BYPL	TOTAL
1. Central Sector without Dadri (Th)	0	0	29.18	43.58	27.24	100.00
2. Dadri (Th)	16.63	0	24.22	36.86	22.39	100.00
3. BTPS	17.73	7.09	21.81	33.2	20.17	100.00
4. RPH	0	0	29.025	44.133	26.842	100.00
5. GT	0	0	29.02	44.16	26.82	100.00
6. Pragati	30.3	0	20.22	30.78	18.7	100.00
7. DVC	0	0	29.18	43.58	27.24	100.00
8. BAWANA CCGT*	7.30	1.82	20.688	30.888	19.304	80.00

(B) 00.00hrs. to 10.00hrs. and 17.00hrs. to 24.00hrs.

SOURCES	LICENSEES					
	NDMC	MES	NDPL	BRPL	BYPL	TOTAL
1. Central Sector without Dadri (Th)	0	0	29.18	43.58	27.24	100.00
2. Dadri (Th)	16.53	0	24.22	36.86	22.39	100.00
3. BTPS	17.73	7.09	21.81	33.2	20.17	100.00
4. RPH	0	0	29.025	44.133	26.842	100.00
5. GT	0	0	29.02	44.16	26.82	100.00
6. Pragati	30.3	0	20.22	30.78	18.7	100.00
7. DVC	0	0	29.18	43.58	27.24	100.00
8. BAWANA CCGT*	7.30	1.82	20.688	30.888	19.304	80.00

* 20% POWER OF BAWANA CCGT ALLOCATED TO HARYANA (10%) & PUNJAB (10%)

**6 POWER AVAILABILITY-DEMAND POSITION AT THE TIME OF PEAK DEMAND
MET DURING OCTOBER 2017**

Date	Time of peak demand	Generation within Delhi										Import from the Grid	Schedule from the Grid	OD(-)/UD(+)	Demand met	Shedding	Un-Restricted Demand
		RP H	GT	PPCL	Rithala	Bawana	Towmcl	East Delhi	DMS WL	BTPS	Total						
(1)	(2)	(3)	(4)	(5)	(6)	(7)	(8)				(9)= (3) to (8)	(10)	(11)	(12)= (11)- (10)	(13)= (11)+ (12)	(14)	(15)= (13)+ (14)
1	23.28.03	0	78	298	0	300	16	-1	14	312	1017	3107	3085	22	4124	0	4124
2	00.01.28	0	78	266	0	287	16	-1	13	307	966	3133	3059	74	4099	0	4099
3	15.46.40	0	78	266	0	290	18	3	18	299	972	3669	3561	108	4641	0	4641
4	15.29.43	0	128	276	0	492	19	1	6	291	1213	3510	3459	51	4723	0	4723
5	18.42.00	0	141	299	0	548	16	2	11	299	1316	3325	3267	58	4641	0	4641
6	15.36.38	0	204	282	0	438	16	3	19	282	1244	3409	3324	85	4653	0	4653
7	18.53.56	0	22	264	0	523	16	4	19	285	1133	3255	3259	-4	4388	0	4388
8	22.53.57	0	145	260	0	505	16	4	16	300	1246	3146	3110	36	4392	0	4392
9	15.21.29	0	204	268	0	454	16	-2	18	281	1239	3321	3397	-76	4560	0	4560
10	19.00.00	0	152	259	0	456	16	2	18	299	1202	3319	3351	-32	4521	0	4521
11	18.26.31	0	71	259	0	371	16	2	16	290	1025	3531	3495	36	4556	0	4556
12	18.37.23	0	71	265	0	470	16	3	15	295	1135	3449	3374	75	4584	0	4584
13	18.47.50	0	71	259	0	471	15	3	10	298	1127	3425	3388	37	4552	0	4552
14	12.23.55	0	108	300	0	-11	13	2	-1	330	741	3432	3316	116	4173	0	4173
15	18.52.02	0	70	262	0	305	16	3	5	298	959	2946	2892	54	3905	0	3905
16	18.42.11	0	70	302	0	320	16	3	17	302	1030	3331	3278	53	4361	0	4361
17	18.37.02	0	212	305	0	482	17	2	17	-4	1031	3209	3241	-32	4240	0	4240
18	11.30.50	0	84	260	0	431	18	-1	-2	-4	786	3245	4031	-786	4031	12	4043
19	23.02.07	0	35	261	0	278	18	4	17	-4	609	2910	2741	169	3519	0	3519
20	00.00.00	0	36	263	0	271	18	4	21	-4	609	2859	2815	44	3468	0	3468
21	18.46.36	0	35	258	0	253	18	4	16	-4	580	2917	2897	20	3497	0	3497
22	18.53.57	0	35	262	0	292	18	-1	13	-4	615	2964	2942	22	3579	0	3579
23	18.31.01	0	35	258	0	249	18	2	15	-4	573	3336	3367	-31	3909	0	3909
24	18.17.57	0	36	262	0	249	18	2	15	-4	578	3333	3266	67	3911	0	3911
25	18.16.14	0	35	265	0	283	18	3	14	-4	614	3239	3258	-19	3853	0	3853
26	11.31.03	0	34	276	0	283	18	4	14	-4	625	3056	2928	128	3681	0	3681
27	18.20.40	0	36	262	0	272	16	4	8	-4	594	3195	3194	1	3789	0	3789
28	18.28.57	0	71	262	0	251	17	4	8	-4	609	2954	2880	74	3563	2	3565
29	18.33.12	0	72	258	0	250	17	5	8	-4	606	2736	2737	-1	3342	0	3342
30	18.13.23	0	36	270	0	251	18	4	9	-4	584	3063	3066	-3	3647	0	3647
31	18.22.31	0	37	151	0	249	16	3	6	-4	458	3204	3110	94	3662	0	3662

POWER AVAILABILITY- DEMAND POSITION AT THE TIME OF MAXIMUM UNRESTRICTED DEMAND DURING OCTOBER 2017

Date	Time of peak demand	Generation within Delhi										Import from the Grid	Schedule from the Grid	OD(-)/UD(+)	Demand met	Shedding	Un-Restricted Demand
		RP H	GT	PPCL	Rithal a	Bawana	Tow mcl	East Delhi	DMS WL	BTPS	Total						
(1)	(2)	(3)	(4)	(5)	(6)	(7)	(8)				(9)= (3) to (8)	(10)	(11)	(12)= (11) - (10)	(13)= (11)+ (12)	(14)	(15)= (13)+ (14)
1	23.28.03	0	78	298	0	300	16	-1	14	312	1017	3107	3085	22	4124	0	4124
2	00.01.28	0	78	266	0	287	16	-1	13	307	966	3133	3059	74	4099	0	4099
3	15.46.40	0	78	266	0	290	18	3	18	299	972	3669	3561	108	4641	0	4641
4	15.29.43	0	128	276	0	492	19	1	6	291	1213	3510	3459	51	4723	0	4723
5	18.42.00	0	141	299	0	548	16	2	11	299	1316	3325	3267	58	4641	0	4641
6	15.36.38	0	204	282	0	438	16	3	19	282	1244	3409	3324	85	4653	0	4653
7	18.53.56	0	22	264	0	523	16	4	19	285	1133	3255	3259	-4	4388	0	4388
8	22.53.57	0	145	260	0	505	16	4	16	300	1246	3146	3110	36	4392	0	4392
9	15.21.29	0	204	268	0	454	16	-2	18	281	1239	3321	3397	-76	4560	0	4560
10	19.00.00	0	152	259	0	456	16	2	18	299	1202	3319	3351	-32	4521	0	4521
11	18.26.31	0	71	259	0	371	16	2	16	290	1025	3531	3495	36	4556	0	4556
12	18.37.23	0	71	265	0	470	16	3	15	295	1135	3449	3374	75	4584	0	4584
13	18.47.50	0	71	259	0	471	15	3	10	298	1127	3425	3388	37	4552	0	4552
14	12.23.55	0	108	300	0	-11	13	2	-1	330	741	3432	3316	116	4173	0	4173
15	18.52.02	0	70	262	0	305	16	3	5	298	959	2946	2892	54	3905	0	3905
16	18.42.11	0	70	302	0	320	16	3	17	302	1030	3331	3278	53	4361	0	4361
17	18.37.02	0	212	305	0	482	17	2	17	-4	1031	3209	3241	-32	4240	0	4240
18	11.30.50	0	84	260	0	431	18	-1	-2	-4	786	3245	4031	-786	4031	12	4043
19	23.02.07	0	35	261	0	278	18	4	17	-4	609	2910	2741	169	3519	0	3519
20	00.00.00	0	36	263	0	271	18	4	21	-4	609	2859	2815	44	3468	0	3468
21	18.46.36	0	35	258	0	253	18	4	16	-4	580	2917	2897	20	3497	0	3497
22	18.53.57	0	35	262	0	292	18	-1	13	-4	615	2964	2942	22	3579	0	3579
23	18.31.01	0	35	258	0	249	18	2	15	-4	573	3336	3367	-31	3909	0	3909
24	18.17.57	0	36	262	0	249	18	2	15	-4	578	3333	3266	67	3911	0	3911
25	18.16.14	0	35	265	0	283	18	3	14	-4	614	3239	3258	-19	3853	0	3853
26	11.31.03	0	34	276	0	283	18	4	14	-4	625	3056	2928	128	3681	0	3681
27	18.20.40	0	36	262	0	272	16	4	8	-4	594	3195	3194	1	3789	0	3789
28	18.28.57	0	71	262	0	251	17	4	8	-4	609	2954	2880	74	3563	2	3565
29	18.33.12	0	72	258	0	250	17	5	8	-4	606	2736	2737	-1	3342	0	3342
30	18.13.23	0	36	270	0	251	18	4	9	-4	584	3063	3066	-3	3647	0	3647
31	18.22.31	0	37	151	0	249	16	3	6	-4	458	3204	3110	94	3662	0	3662

SOURCEWISE SCHEDULED DRAWL FROM NORTHERN GRID AS WELL AS AVAILABILITY WITHIN DELHI FOR OCTOBER 2017

A) AVAILABILITY FROM GENCO AND PRAGATI STNs. (all fig in MUs)

A (i) RPH	0.000
(ii) GT+STG	60.522
(iii) PRAGATI	203.391
(iv) RITHALA	0.000
(v) BAWANA CCGT	264.391
(vi) Timarpur – Okhla	14.955
EDWPCL	2.539
DMSWL	11.781
TOTAL	557.669
B) AVAILABILITY FROM BTPS	111.728
C) AUXILIARY CONSUMPTION OF GENERATING STNs. EXCLUDING BTPS	21.704
D) NET GENERATION AVAILABLE WITHIN DELHI(A+B-C)	647.693

B) SOURCE WISE SCHEDULED DRAWL FROM THE NORTHERN GRID

NAME OF THE STATION	AVAILABILITY AT POWER PLANT	AVAILABILITY AT DELHI PERIPHERY	ALLOCATION MADE BY NRLDC AT POWER PLANT	ALLOCATION MADE BY NRLDC AT DELHI PERIPHERY
B/SUIL	2.311	2.250	2.311	2.250
SALAL	19.798	19.277	19.798	19.277
SASAN	274.315	266.917	270.828	263.529
TANKAPUR	6.462	6.291	6.462	6.291
CHAMERA	7.816	7.610	7.816	7.610
CHAMERA -II	10.949	10.659	10.949	10.659
CHAMERA -III	7.262	7.070	7.262	7.070
DHAULIGANGA	12.030	11.712	12.030	11.712
SEWA -2	1.475	1.436	1.475	1.436
URI	7.029	6.842	7.029	6.842
URI-II	5.813	5.657	5.820	5.665
KOLDAM	0.000	0.000	0.000	0.000
KOTESHWAR	7.267	7.074	7.267	7.074
PARBATI3	4.511	4.392	4.511	4.392
RAMPUR	0.000	0.000	0.000	0.000
MUNDRA_UMPP	0.000	0.000	0.000	0.000
ANTA (GAS)	0.012	0.012	0.000	0.000
ANTA (RLNG)	27.451	26.715	0.004	0.004
ANTA (LIQUID)	0.910	0.886	0.010	0.010
DADRI (GAS)	12.971	12.622	7.870	7.655
DADRI (RLNG)	25.084	24.421	0.003	0.003
DADRI (LIQUID)	21.621	21.026	0.000	0.000
AURAIYA (GAS)	0.000	0.000	0.000	0.000
AURAIYA (RLNG)	27.452	26.727	0.019	0.019
AURAIYA (LIQUID)	14.534	14.133	0.000	0.000
SINGRAULI	92.910	90.430	83.319	81.101
RIHAND -I	67.341	65.536	62.472	60.803
RIHAND -II	88.353	85.987	83.602	81.371
RIHAND -III	92.497	90.020	80.413	78.271
UNCHAHAHAR-I	9.583	9.329	7.482	7.284
UNCHAHAHAR-II	26.772	26.053	21.505	20.930
UNCHAHAHAR-III	18.988	18.479	15.048	14.646
UNCHAHAHAR-IV	15.765	15.340	11.126	10.835
DADRI (TH)	377.617	367.422	227.639	221.549
DADRI (TH) STAGE-II	377.047	366.872	326.817	318.032
NAPP	31.425	30.581	31.425	30.581
RAPP 'B'	0.000	0.000	0.000	0.000
RAPP 'C'	39.924	38.855	39.924	38.855
NATHPA JHAKRI	42.795	41.659	31.925	31.078
DULASTI	29.202	28.431	29.125	28.356
TEHRI	13.882	13.512	13.882	13.512
JHAJJAR	293.757	285.864	203.915	198.449
KHELGAON	31.216	30.385	24.798	24.141

NAME OF THE STATION	AVAILABILITY AT POWER PLANT	AVAILABILITY AT DELHI PERIPHERY	ALLOCATION MADE BY NRLDC AT POWER PLANT	ALLOCATION MADE BY NRLDC AT DELHI PERIPHERY
KHELGAON-II	97.674	95.050	80.030	77.889
FARAKA	11.002	10.708	7.810	7.602
TALA	12.724	12.389	12.724	12.389
TALCHER	0.000	0.000	0.000	0.000
DVC	217.924	215.622	215.622	209.851
CHATTISHGARH	0.501	0.492	0.492	0.480
TRIPURA	3.366	3.343	3.343	3.256
MEGHALAYA	9.648	9.554	9.554	9.315
GOA	0.000	0.000	0.000	0.000
ANDHRA	0.000	0.000	0.000	0.000
MADHYA PRADESH	0.000	0.000	0.000	0.000
METHON POWER(NDPL)LT-06	168.706	167.339	167.339	162.885
DVC MEJIA (LT-08)(BYPL)	49.859	49.338	49.338	47.988
URS	0.000	0.000	0.000	0.000
JAMMU & KASHMIR	1.475	1.456	1.456	1.417
HIMACHAL PRADESH	9.911	9.740	9.740	9.485
ASSAM	0.000	0.000	0.000	0.000
KARNATAKA	0.051	0.051	0.051	0.049
ORISSA	2.177	2.160	2.160	2.106
DVC LT-9	0.000	0.000	0.000	0.000
HARYANA (LT-05)	52.145	51.475	51.475	50.091
SIKKIM	0.219	0.217	0.217	0.211
WEST BENGAL	1.476	1.465	1.465	1.427
UTTRANCHAL	0.000	0.000	0.000	0.000
TAMILNAIDU	0.000	0.000	0.000	0.000
MANIPUR	0.000	0.000	0.000	0.000
RAJASTHAN(SOLAR) BRPL-LT36	3.938	3.869	3.869	3.765
RAJASTHAN(SOLAR) BYPL - LT-35	3.823	3.756	3.756	3.655
RAJASTHAN(SOLAR) TPDDL LT-31	3.712	3.646	3.646	3.549
TO GOA	-9.986	-10.240	-10.240	-10.521
TO ANDHRA	-5.661	-5.722	-5.722	-5.910
TO MADHYA PRADESH	-67.259	-68.269	-68.269	-70.142
TO MAHARASHTRA	0.000	0.000	0.000	0.000
TO UTTAR PRADESH	-1.538	-1.571	-1.571	-1.614
TO UTTRANCHAL	0.000	0.000	0.000	0.000
TO KERALA	-0.404	-0.412	-0.412	-0.423
TO BIHAR	-5.254	-5.322	-5.322	-5.480
TO RAJASTHAN	0.000	0.000	0.000	0.000
TO TRIPURA	0.000	0.000	0.000	0.000
BTPS TO MP	0.000	0.000	0.000	0.000
TO HIMACHAL PRADESH	-27.988	-28.528	-28.528	-29.368
TO HARYANA	0.000	0.000	0.000	0.000
POWER EXCHANGE(IEX)	35.345	34.416	35.345	34.416
TO POWER EXCHANGE (IEX)	-97.033	-99.776	-97.033	-99.776
POWER EXCHANGE(PX)	0.000	0.000	0.000	0.000
TO POWER EXCHANGE (PX)	0.000	0.000	0.000	0.000
TO SHARE PROJECT (HARYANA)	-20.057	-20.607	-20.057	-20.607
TO SHARE PROJECT (PUNJAB)	-19.970	-20.518	-19.970	-20.518
TOTAL	2576.677	2503.602	2068.187	1998.756

C) AGENCY WISE BREAKUP OF ENERGY SCHEDULED DRAWL FROM THE GRID

NAME OF THE STATION	AVAILABILITY AT POWER PLANT	AVAILABILITY AT DELHI PERIPHERY	ALLOCATION MADE BY NRLDC AT POWER PLANT	ALLOCATION MADE BY NRLDC AT DELHI PERIPHERY
NTPC - NR	1296.909	1262.010	927.329	902.512
NTPC - ER	139.893	136.142	112.638	109.632
NHPC	114.659	111.627	114.589	111.560
NPC	71.349	69.436	71.349	69.436
SASAN	274.315	266.917	270.828	263.529
KOTESHWAR	7.267	7.074	7.267	7.074
MUNDRA_UMPP	0.000	0.000	0.000	0.000
NATHPA JHAKRI	42.795	41.659	31.925	31.078
TEHRI	13.882	13.512	13.882	13.512
TALA	12.724	12.389	12.724	12.389
JHAJJAR	293.757	285.864	203.915	198.449
TALCHER	0.000	0.000	0.000	0.000
RAJASTHAN SOLAR(BRPL)T-36	3.938	3.869	3.869	3.765
RAJASTHAN SOLAR(BYPL)T-35	3.823	3.756	3.756	3.655
RAJASTHAN SOLAR(TPDDL)T-31	3.712	3.646	3.646	3.549
DVC	217.924	215.622	215.622	209.851
CHATTISHGARH	0.501	0.492	0.492	0.480
TRIPURA	3.366	3.343	3.343	3.256
MEGHALAYA	9.648	9.554	9.554	9.315
GOA	0.000	0.000	0.000	0.000
ANDHRA	0.000	0.000	0.000	0.000
MADHYA PRADESH	0.000	0.000	0.000	0.000
METHON POWER (NDPL)-LT-06	168.706	167.339	167.339	162.885
DVC MEJIA (LT-08)(BYPL)	49.859	49.338	49.338	47.988
URS	0.000	0.000	0.000	0.000
JAMMU & KASHMIR	1.475	1.456	1.456	1.417
HIMACHAL PRADESH	9.911	9.740	9.740	9.485
ASSAM	0.000	0.000	0.000	0.000
KARNATAKA	0.051	0.051	0.051	0.049
ORISSA	2.177	2.160	2.160	2.106
DVC (FOR NDPL) LT-09	0.000	0.000	0.000	0.000
HARYANA (LT -05)	52.145	51.475	51.475	50.091
SIKKIM	0.219	0.217	0.217	0.211
WEST BENGAL	1.476	1.465	1.465	1.427
UTTRANCHAL	0.000	0.000	0.000	0.000
TAMILNAIDU	0.000	0.000	0.000	0.000
MANIPUR	0.000	0.000	0.000	0.000
POWER EXCHANGE(IEX)	35.345	34.416	35.345	34.416
POWER EXCHANGE(PX)	0.000	0.000	0.000	0.000
TOTAL	2831.829	2764.568	2325.313	2263.116

D) AGENCY WISE BREAKUP OF ENERGY SCHEDULED BY NRLDC FOR EXPORT TO OTHER UTILITIES FROM DTL

NAME OF THE STATION	AVAILABILITY AT POWER PLANT	AVAILABILITY AT PERIPHERY	ALLOCATION MADE BY NRLDC AT POWER PLANT	ALLOCATION MADE BY NRLDC AT POWER PERIPHERY
TO GOA	-9.986	-10.240	-10.240	-10.521
TO ANDHRA	-5.661	-5.722	-5.722	-5.910
TO MADHYA PRADESH	-67.259	-68.269	-68.269	-70.142
TO MAHARASHTRA	0.000	0.000	0.000	0.000
TO UTTARANCHAL	0.000	0.000	0.000	0.000
TO UTTAR PRADESH	-1.538	-1.571	-1.571	-1.614
TO KERALA	-0.404	-0.412	-0.412	-0.423
TO BIHAR	-5.254	-5.322	-5.322	-5.480
TO RAJASTHAN	0.000	0.000	0.000	0.000
TO TRIPURA	0.000	0.000	0.000	0.000
BTPS TO MP	0.000	0.000	0.000	0.000
TO HIMACHAL PRADESH	-27.988	-28.528	-28.528	-29.368
TO HARYANA	0.000	0.000	0.000	0.000
TO POWER EXCHANGE (IEX)	-97.033	-99.776	-97.033	-99.776
TO POWER EXCHANGE (PX)	0.000	0.000	0.000	0.000
TO SHARE PROJECT (HARYANA)	-20.057	-20.607	-20.057	-20.607
TO SHARE PROJECT (PUNJAB)	-19.970	-20.518	-19.970	-20.518
TOTAL	-255.151	-260.966	-257.126	-264.360
TOTAL SCHEDULED DRAWAL FROM THE GRID	2576.677	2503.602	2068.187	1998.756

TOTAL CONSUMPTION INCLUDING AUX. OF GENERATING STNs. EXCLUDING BTPS	2659.084
NET CONSUMPTION	2637.380
AVAILABILITY WITHIN DELHI	647.693
ACTUAL DRAWAL FROM THE GRID	1989.687
OVER DRAWAL(+)/UNDER DRAWAL(-) FROM THE GRID ON THE BASIS OF SCHEDULED ALLOCATION MADE BY NRLDC TO DELHI AT PERIPHERY	-9.069
LOAD SHEDDING	1.001
UNRESTRICTED DEMAND (GROSS)	2660.085
UNRESTRICTED DEMAND (NET)	2638.381
MAX. NET CONSUMPTION	101.667 ON 04.10.2017
MAX. LOAD SHEDDING	492MW ON 14.10.2017 AT 10.21HRS.
PEAK LOAD	Peak Demand during the month
DAY PEAK	4723MW AT 15.29.43HRS ON 04.10.2017
EVENING PEAK	4641MW AT 18.42HRS ON 05.10.2017
P.L.F. OF GENCO AND PRAGATI STNs.	RPH GT PRAGATI RITHALA BAWANA Timarpur Okhla EDWPCL DMSWL
	0.00% 30.13% 82.84% 0.00% 25.93% 125.63% 28.44% 65.98%

DATE	No. of Under Freq. Relay Operated	Shedding due to under frequency relay operation in MUs					Shedding due to Grid Restrictions (Over drawl / low freq.)				
		BSES		NDPL	NDMC	TOTAL	BSES		NDPL	NDMC	MES
		BYPL	BRPL				BYPL	BRPL			
1	2	3	4	5	6	7=3 to 6	8	9	10	11	12
01.Oct.17	0	0.000	0.000	0.000	0.000	0.000	0.000	0.000	0.000	0.000	0.000
02.Oct.17	0	0.000	0.000	0.000	0.000	0.000	0.000	0.000	0.000	0.000	0.000
03.Oct.17	0	0.000	0.000	0.000	0.000	0.000	0.000	0.000	0.000	0.000	0.000
04.Oct.17	0	0.000	0.000	0.000	0.000	0.000	0.000	0.000	0.000	0.000	0.000
05.Oct.17	0	0.000	0.000	0.000	0.000	0.000	0.000	0.000	0.015	0.000	0.000
06.Oct.17	0	0.000	0.000	0.000	0.000	0.000	0.000	0.000	0.000	0.000	0.000
07.Oct.17	0	0.000	0.000	0.000	0.000	0.000	0.000	0.000	0.000	0.000	0.000
08.Oct.17	0	0.000	0.000	0.000	0.000	0.000	0.000	0.000	0.013	0.000	0.000
09.Oct.17	0	0.000	0.000	0.000	0.000	0.000	0.000	0.000	0.000	0.000	0.000
10.Oct.17	0	0.000	0.000	0.000	0.000	0.000	0.000	0.000	0.000	0.000	0.000
11.Oct.17	0	0.000	0.000	0.000	0.000	0.000	0.000	0.000	0.000	0.000	0.000
12.Oct.17	0	0.000	0.000	0.000	0.000	0.000	0.000	0.000	0.000	0.000	0.000
13.Oct.17	0	0.000	0.000	0.000	0.000	0.000	0.000	0.000	0.000	0.000	0.000
14.Oct.17	0	0.000	0.000	0.000	0.000	0.000	0.000	0.000	0.000	0.000	0.000
15.Oct.17	0	0.000	0.000	0.000	0.000	0.000	0.000	0.000	0.000	0.000	0.000
16.Oct.17	0	0.000	0.000	0.000	0.000	0.000	0.000	0.000	0.000	0.000	0.000
17.Oct.17	0	0.000	0.000	0.000	0.000	0.000	0.000	0.000	0.000	0.000	0.000
18.Oct.17	0	0.000	0.000	0.000	0.000	0.000	0.000	0.000	0.000	0.000	0.000
19.Oct.17	0	0.000	0.000	0.000	0.000	0.000	0.000	0.000	0.000	0.000	0.000
20.Oct.17	0	0.000	0.000	0.000	0.000	0.000	0.000	0.000	0.000	0.000	0.000
21.Oct.17	0	0.000	0.000	0.000	0.000	0.000	0.000	0.000	0.000	0.000	0.000
22.Oct.17	0	0.000	0.000	0.000	0.000	0.000	0.000	0.000	0.000	0.000	0.000
23.Oct.17	0	0.000	0.000	0.000	0.000	0.000	0.000	0.000	0.000	0.000	0.000
24.Oct.17	0	0.000	0.000	0.000	0.000	0.000	0.000	0.000	0.000	0.000	0.000
25.Oct.17	0	0.000	0.000	0.0001	0.000	0.000	0.000	0.000	0.000	0.000	0.000
26.Oct.17	0	0.000	0.000	0.000	0.000	0.000	0.000	0.000	0.000	0.000	0.000
27.Oct.17	0	0.000	0.000	0.000	0.000	0.000	0.000	0.000	0.000	0.000	0.000
28.Oct.17	0	0.000	0.000	0.000	0.000	0.000	0.000	0.000	0.000	0.000	0.000
29.Oct.17	0	0.000	0.000	0.000	0.000	0.000	0.000	0.000	0.000	0.000	0.000
30.Oct.17	0	0.000	0.000	0.000	0.000	0.000	0.000	0.000	0.000	0.000	0.000
31.Oct.17	0	0.000	0.000	0.000	0.000	0.000	0.000	0.000	0.000	0.000	0.000
TOTAL	0	0.000	0.000	0.000	0.000	0.000	0.000	0.000	0.028	0.000	0.000

ALL FIGURES IN MUs

Date	Shedding due to Transmission/Grid Constraints in Central Sector Stations / TTC / ATC VIOLATION				DUE TO NEW GRID CODE REGULATION DEVIATION			Shedding due to Transmission/Grid Constraints in Central sector stations				Total 24=8 to 23	Total shedding due to grid restrictions 25=7+24
	BSES		NDPL	NDMC	BSES		TPDDL	NDMC	BSES				
	BYPL	BRPL			BYPL	BRPL			BYPL	BRPL			
	13	14	15	16	17	18	19	20	21	22	23		
01.Oct.17	0.000	0.000	0.000	0.000	0.000	0.000	0.000	0.000	0.000	0.000	0.000	0.000	0.000
02.Oct.17	0.000	0.000	0.000	0.000	0.000	0.000	0.000	0.000	0.000	0.000	0.000	0.000	0.000
03.Oct.17	0.000	0.000	0.000	0.000	0.000	0.000	0.000	0.000	0.000	0.000	0.000	0.000	0.000
04.Oct.17	0.000	0.000	0.000	0.000	0.000	0.000	0.000	0.000	0.000	0.000	0.000	0.000	0.000
05.Oct.17	0.000	0.000	0.000	0.000	0.000	0.000	0.000	0.000	0.000	0.000	0.000	0.015	0.015
06.Oct.17	0.000	0.000	0.000	0.000	0.000	0.000	0.000	0.000	0.000	0.000	0.000	0.000	0.000
07.Oct.17	0.000	0.000	0.000	0.000	0.000	0.000	0.000	0.000	0.000	0.000	0.000	0.000	0.000
08.Oct.17	0.000	0.000	0.000	0.000	0.000	0.000	0.000	0.000	0.000	0.000	0.000	0.013	0.013
09.Oct.17	0.000	0.000	0.000	0.000	0.000	0.000	0.000	0.000	0.000	0.000	0.000	0.000	0.000
10.Oct.17	0.000	0.000	0.000	0.000	0.000	0.000	0.000	0.000	0.000	0.000	0.000	0.000	0.000
11.Oct.17	0.000	0.000	0.000	0.000	0.000	0.000	0.000	0.000	0.000	0.000	0.000	0.000	0.000
12.Oct.17	0.000	0.000	0.000	0.000	0.000	0.000	0.000	0.000	0.000	0.000	0.000	0.000	0.000
13.Oct.17	0.000	0.000	0.000	0.000	0.000	0.000	0.000	0.000	0.000	0.000	0.000	0.000	0.000
14.Oct.17	0.000	0.000	0.000	0.000	0.000	0.000	0.000	0.000	0.000	0.000	0.000	0.000	0.000
15.Oct.17	0.000	0.000	0.000	0.000	0.000	0.000	0.000	0.000	0.000	0.000	0.000	0.000	0.000
16.Oct.17	0.000	0.000	0.000	0.000	0.000	0.000	0.000	0.000	0.000	0.000	0.000	0.000	0.000
17.Oct.17	0.000	0.000	0.000	0.000	0.000	0.000	0.000	0.000	0.000	0.000	0.000	0.000	0.000
18.Oct.17	0.000	0.000	0.000	0.000	0.000	0.000	0.000	0.000	0.000	0.000	0.000	0.000	0.000
19.Oct.17	0.000	0.000	0.000	0.000	0.000	0.000	0.000	0.000	0.000	0.000	0.000	0.000	0.000
20.Oct.17	0.000	0.000	0.000	0.000	0.000	0.000	0.000	0.000	0.000	0.000	0.000	0.000	0.000
21.Oct.17	0.000	0.000	0.000	0.000	0.000	0.000	0.000	0.000	0.000	0.000	0.000	0.000	0.000
22.Oct.17	0.000	0.000	0.000	0.000	0.000	0.000	0.000	0.000	0.000	0.000	0.000	0.000	0.000
23.Oct.17	0.000	0.000	0.000	0.000	0.000	0.000	0.000	0.000	0.000	0.000	0.000	0.000	0.000
24.Oct.17	0.000	0.000	0.000	0.000	0.000	0.000	0.000	0.000	0.000	0.000	0.000	0.000	0.000
25.Oct.17	0.000	0.000	0.000	0.000	0.000	0.000	0.000	0.000	0.000	0.000	0.000	0.000	0.000
26.Oct.17	0.000	0.000	0.000	0.000	0.000	0.000	0.000	0.000	0.000	0.000	0.000	0.000	0.000
27.Oct.17	0.000	0.000	0.000	0.000	0.000	0.000	0.000	0.000	0.000	0.000	0.000	0.000	0.000
28.Oct.17	0.000	0.000	0.000	0.000	0.000	0.000	0.000	0.000	0.000	0.000	0.000	0.000	0.000
29.Oct.17	0.000	0.000	0.000	0.000	0.000	0.000	0.000	0.000	0.000	0.000	0.000	0.000	0.000
30.Oct.17	0.000	0.000	0.000	0.000	0.000	0.000	0.000	0.000	0.000	0.000	0.000	0.000	0.000
31.Oct.17	0.000	0.000	0.000	0.000	0.000	0.000	0.000	0.000	0.000	0.000	0.000	0.000	0.000
TOTAL	0.000	0.000	0.000	0.000	0.000	0.000	0.000	0.000	0.000	0.000	0.000	0.028	0.028

ALL FIGURES IN MUs

Date	DUE TO T&D CONSTRAINTS IN DELHI SYSTEM								
	DTL					DISCOMS			
	BSES		NDPL	NDMC	MES	BSES		NDPL	NDMC
	BYPL	BRPL				BYPL	BRPL		
26	27	28	29	30	31	32	33	34	
01.Oct.17	0.000	0.084	0.000	0.000	0.000	0.000	0.074	0.000	0.000
02.Oct.17	0.000	0.000	0.001	0.000	0.000	0.005	0.011	0.001	0.000
03.Oct.17	0.000	0.000	0.000	0.000	0.000	0.005	0.000	0.000	0.000
04.Oct.17	0.000	0.000	0.001	0.000	0.000	0.000	0.023	0.000	0.000
05.Oct.17	0.000	0.001	0.000	0.000	0.000	0.022	0.002	0.000	0.000
06.Oct.17	0.000	0.000	0.000	0.000	0.000	0.000	0.034	0.000	0.000
07.Oct.17	0.000	0.000	0.000	0.000	0.000	0.000	0.005	0.000	0.000
08.Oct.17	0.000	0.000	0.000	0.000	0.000	0.000	0.001	0.000	0.000
09.Oct.17	0.000	0.000	0.000	0.000	0.000	0.002	0.000	0.009	0.000
10.Oct.17	0.000	0.000	0.000	0.000	0.000	0.000	0.001	0.004	0.000
11.Oct.17	0.000	0.000	0.000	0.000	0.000	0.002	0.030	0.000	0.000
12.Oct.17	0.000	0.000	0.000	0.000	0.000	0.000	0.011	0.001	0.000
13.Oct.17	0.000	0.000	0.000	0.000	0.000	0.000	0.025	0.006	0.000
14.Oct.17	0.000	0.000	0.329	0.000	0.000	0.000	0.037	0.000	0.000
15.Oct.17	0.000	0.000	0.000	0.000	0.000	0.000	0.000	0.0000	0.000
16.Oct.17	0.000	0.000	0.000	0.000	0.000	0.000	0.000	0.000	0.000
17.Oct.17	0.000	0.0000	0.0000	0.000	0.000	0.000	0.003	0.000	0.000
18.Oct.17	0.000	0.018	0.001	0.000	0.000	0.015	0.000	0.0000	0.000
19.Oct.17	0.000	0.003	0.000	0.000	0.000	0.004	0.002	0.000	0.000
20.Oct.17	0.000	0.008	0.000	0.000	0.000	0.003	0.032	0.0000	0.000
21.Oct.17	0.001	0.003	0.000	0.000	0.000	0.000	0.020	0.005	0.000
22.Oct.17	0.0000	0.004	0.000	0.000	0.000	0.000	0.001	0.000	0.000
23.Oct.17	0.000	0.000	0.000	0.000	0.000	0.000	0.000	0.0000	0.000
24.Oct.17	0.000	0.000	0.000	0.000	0.000	0.001	0.004	0.000	0.000
25.Oct.17	0.000	0.008	0.000	0.000	0.000	0.000	0.025	0.000	0.000
26.Oct.17	0.000	0.000	0.000	0.000	0.000	0.006	0.002	0.0000	0.000
27.Oct.17	0.000	0.000	0.000	0.000	0.000	0.004	0.014	0.002	0.000
28.Oct.17	0.000	0.000	0.000	0.000	0.000	0.000	0.001	0.000	0.000
29.Oct.17	0.000	0.000	0.000	0.000	0.000	0.000	0.001	0.000	0.000
30.Oct.17	0.000	0.000	0.000	0.000	0.000	0.000	0.002	0.000	0.000
31.Oct.17	0.000	0.000	0.000	0.000	0.000	0.000	0.010	0.000	0.000
TOTAL	0.001	0.129	0.332	0.000	0.000	0.069	0.371	0.028	0.000

ALL FIGURES IN MU_s

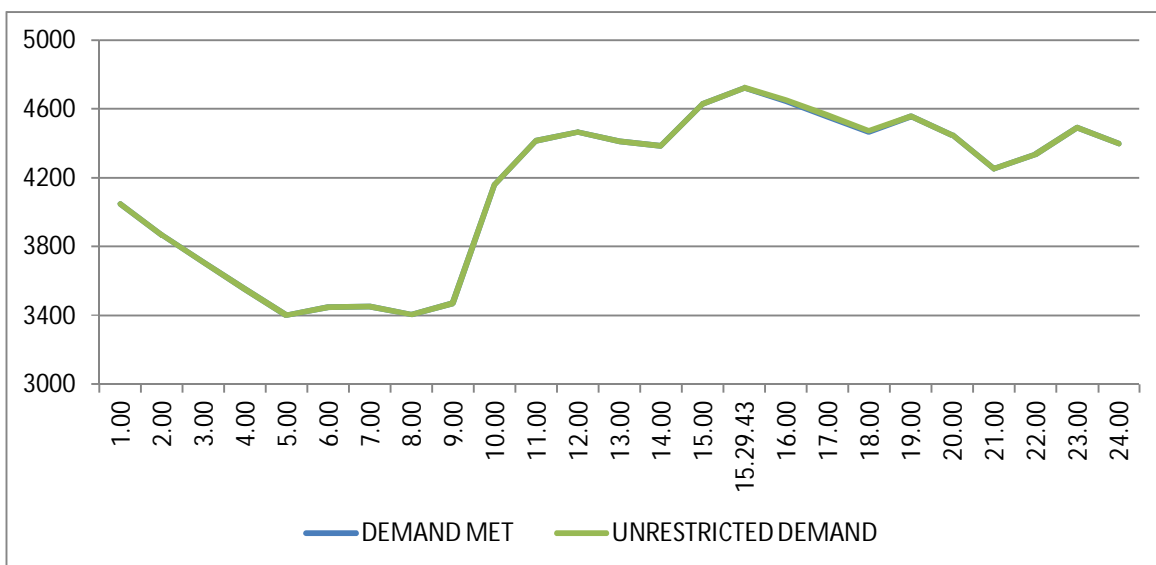
DATE	OTHER AGENCIES LIKE GENCO, BBMB, BTPS ETC.				THEFT PRONE SHEDDING			TOTAL SHEDDING DUE TO T&D CONSTS. & THEFT PRONE	GRAND TOTAL
	BSES		NDPL	NDMC	BSES		NDPL		
	BYPL	BRPL			BYPL	BRPL			
1	35	36	37	38	39	40	41	42= 26 to 41	43 = 25 + 42
01.Oct.17	0.000	0.000	0.000	0.000	0.000	0.000	0.000	0.158	0.158
02.Oct.17	0.000	0.000	0.000	0.000	0.000	0.000	0.000	0.018	0.018
03.Oct.17	0.000	0.000	0.000	0.000	0.000	0.000	0.000	0.005	0.005
04.Oct.17	0.000	0.000	0.000	0.000	0.000	0.000	0.000	0.024	0.024
05.Oct.17	0.000	0.000	0.000	0.000	0.000	0.000	0.023	0.048	0.063
06.Oct.17	0.000	0.000	0.000	0.000	0.000	0.000	0.000	0.034	0.034
07.Oct.17	0.000	0.000	0.000	0.000	0.000	0.000	0.000	0.005	0.005
08.Oct.17	0.000	0.000	0.000	0.000	0.000	0.000	0.020	0.021	0.034
09.Oct.17	0.000	0.000	0.000	0.000	0.000	0.000	0.000	0.011	0.011
10.Oct.17	0.000	0.000	0.000	0.000	0.000	0.000	0.000	0.005	0.005
11.Oct.17	0.000	0.000	0.000	0.000	0.000	0.000	0.000	0.032	0.032
12.Oct.17	0.000	0.000	0.000	0.000	0.000	0.000	0.000	0.012	0.012
13.Oct.17	0.000	0.000	0.000	0.000	0.000	0.000	0.000	0.031	0.031
14.Oct.17	0.000	0.000	0.000	0.000	0.000	0.000	0.000	0.366	0.366
15.Oct.17	0.000	0.000	0.000	0.000	0.000	0.000	0.000	0.000	0.0000
16.Oct.17	0.000	0.000	0.000	0.000	0.000	0.000	0.000	0.000	0.000
17.Oct.17	0.000	0.000	0.000	0.000	0.000	0.000	0.000	0.003	0.003
18.Oct.17	0.000	0.000	0.000	0.000	0.000	0.000	0.000	0.034	0.034
19.Oct.17	0.000	0.000	0.000	0.000	0.000	0.000	0.000	0.009	0.009
20.Oct.17	0.000	0.000	0.000	0.000	0.000	0.000	0.000	0.043	0.043
21.Oct.17	0.000	0.000	0.000	0.000	0.000	0.000	0.000	0.029	0.029
22.Oct.17	0.000	0.000	0.000	0.000	0.000	0.000	0.000	0.005	0.005
23.Oct.17	0.000	0.000	0.000	0.000	0.000	0.000	0.000	0.000	0.0000
24.Oct.17	0.000	0.000	0.000	0.000	0.000	0.000	0.000	0.005	0.005
25.Oct.17	0.000	0.000	0.000	0.000	0.000	0.000	0.000	0.033	0.033
26.Oct.17	0.000	0.000	0.000	0.000	0.000	0.000	0.000	0.008	0.008
27.Oct.17	0.000	0.000	0.000	0.000	0.000	0.000	0.000	0.020	0.020
28.Oct.17	0.000	0.000	0.000	0.000	0.000	0.000	0.000	0.001	0.001
29.Oct.17	0.000	0.000	0.000	0.000	0.000	0.000	0.000	0.001	0.001
30.Oct.17	0.000	0.000	0.000	0.000	0.000	0.000	0.000	0.002	0.002
31.Oct.17	0.000	0.000	0.000	0.000	0.000	0.000	0.000	0.010	0.010
TOTAL	0.000	0.000	0.000	0.000	0.000	0.000	0.043	0.973	1.001

DATE	(NET CONS.)	MAXI. DEMAND MET DURING THE DAY	TIME OF OCCURRENCE OF MAX DEMAND	SHEDDING AT THIS TIME	UN-RESTRICTED DEMAND	MAXIMUM UN-RESTRICTED DEMAND DURING THE DAY	TIME OF MAX. UN-REST. DEMAND	DEMAND AT THAT TIME	SHEDDING AT THAT TIME
	In Mus.	IN MW	IN HRS.	IN MW	IN MW	IN MW	HRS.	IN MW	IN MW
1	32	33	34	35	36=33+35	37=39+40	38	39	40
01.Oct.17	86.600	4124	23:08:03	0	4124	4124	23:08:03	4124	0
02.Oct.17	81.891	4099	00:01:28	0	4099	4099	00:01:28	4099	0
03.Oct.17	96.147	4641	15:46:40	0	4641	4641	15:46:40	4641	0
04.Oct.17	101.667	4723	15:29:43	0	4723	4723	15:29:43	4723	0
05.Oct.17	100.609	4641	18:42	0	4641	4641	18:42	4641	0
06.Oct.17	101.066	4653	15:36:38	0	4653	4653	15:36:38	4653	0
07.Oct.17	95.645	4388	18:53:56	0	4388	4388	18:53:56	4388	0
08.Oct.17	91.244	4392	22:53:57	0	4392	4392	22:53:57	4392	0
09.Oct.17	97.766	4560	15:21:29	0	4560	4560	15:21:29	4560	0
10.Oct.17	99.300	4521	19:00	0	4521	4521	19:00	4521	0
11.Oct.17	100.660	4556	18:26:31	0	4556	4556	18:26:31	4556	0
12.Oct.17	98.978	4584	18:37:23	0	4584	4584	18:37:23	4584	0
13.Oct.17	96.645	4552	18:47:50	0	4552	4552	18:47:50	4552	0
14.Oct.17	90.451	4173	12:23:55	0	4173	4173	12:23:55	4173	0
15.Oct.17	83.097	3905	18:52:02	0	3905	3905	18:52:02	3905	0
16.Oct.17	90.407	4361	18:42:11	0	4361	4361	18:42:11	4361	0
17.Oct.17	89.122	4240	18:37:02	0	4240	4240	18:37:02	4240	0
18.Oct.17	83.639	4031	11:30:50	12	4043	4043	11:30:50	4031	12
19.Oct.17	74.804	3517	23:02:07	0	3517	3517	23:02:07	3517	0
20.Oct.17	74.440	3468	00:00:00	0	3468	3468	00:00:00	3468	0
21.Oct.17	72.275	3497	18:46:36	0	3497	3497	18:46:36	3497	0
22.Oct.17	71.956	3579	18:53:57	0	3579	3579	18:53:57	3579	0
23.Oct.17	79.305	3909	18:31:01	0	3909	3909	18:31:01	3909	0
24.Oct.17	78.043	3911	18:17:57	0	3911	3911	18:17:57	3911	0
25.Oct.17	76.004	3853	18:16:14	0	3853	3853	18:16:14	3853	0
26.Oct.17	73.222	3681	11:31:03	0	3681	3681	11:31:03	3681	0
27.Oct.17	73.228	3789	18:20:40	0	3789	3789	18:20:40	3789	0
28.Oct.17	71.526	3563	18:28:57	2	3565	3565	18:28:57	3563	2
29.Oct.17	66.664	3342	18:33:12	0	3342	3342	18:33:12	3342	0
30.Oct.17	70.835	3647	18:13:23	0	3647	3647	18:13:23	3647	0
31.Oct.17	70.144	3662	18:22:31	0	3662	3662	18:22:31	3662	0
TOTAL	2637.380	4723 04.10.17	15:29:43	0	4723 04.10.17	4723	15:29:43	4723	0

10 **LOAD PATTERN OF DELHI ON THE DAY OF PEAK DEMAND MET DURING OCTOBER 2017 ON 04.10.2017- 4723MW AT 15.29.43HRS.**

All figures in MW

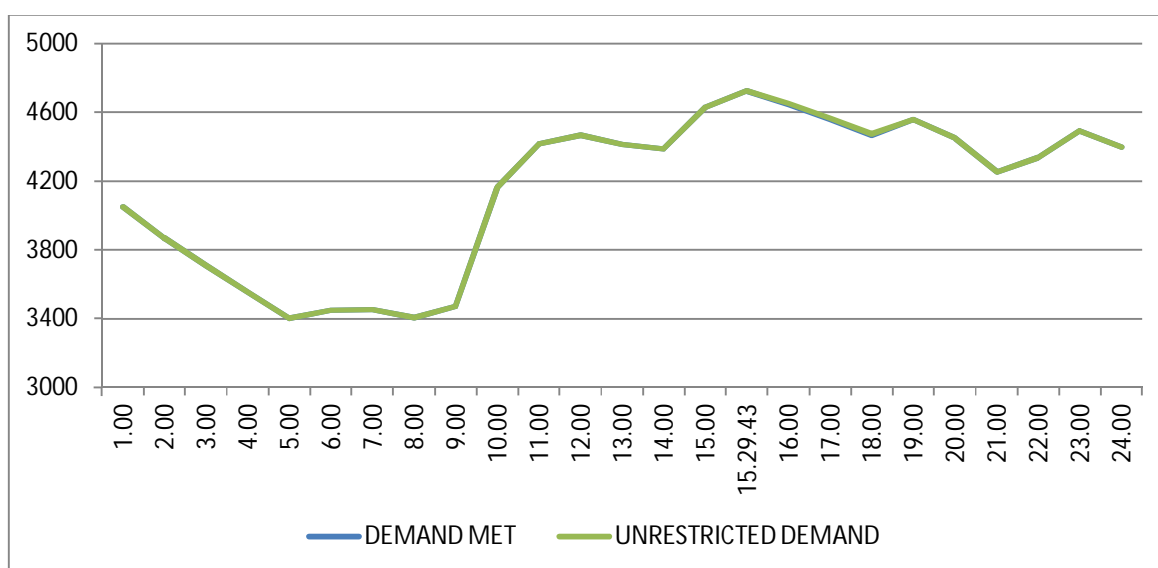
Hrs.	Demand	Load Shedding	Un-Restricted Demand
1.00	4048	0	4048
2.00	3868	0	3868
3.00	3711	0	3711
4.00	3552	0	3552
5.00	3403	0	3403
6.00	3450	0	3450
7.00	3451	0	3451
8.00	3404	0	3404
9.00	3469	0	3469
10.00	4164	0	4164
11.00	4415	0	4415
12.00	4468	0	4468
13.00	4412	0	4412
14.00	4386	0	4386
15.00	4628	0	4628
15.29.43	4723	0	4723
16.00	4645	7	4652
17.00	4558	7	4565
18.00	4465	10	4475
19.00	4557	0	4557
20.00	4448	0	4448
21.00	4253	0	4253
22.00	4336	0	4336
23.00	4491	0	4491
24.00	4399	0	4399
Total (IN MUS)	101.667	0.205	101.872



11 LOAD PATTERN OF DELHI ON THE DAY OF MAXIMUM UN-RESTRICTED DEMAND DURING OCTOBER 2017 ON 04.10.2017-4723MW AT 15.29.43HRS.

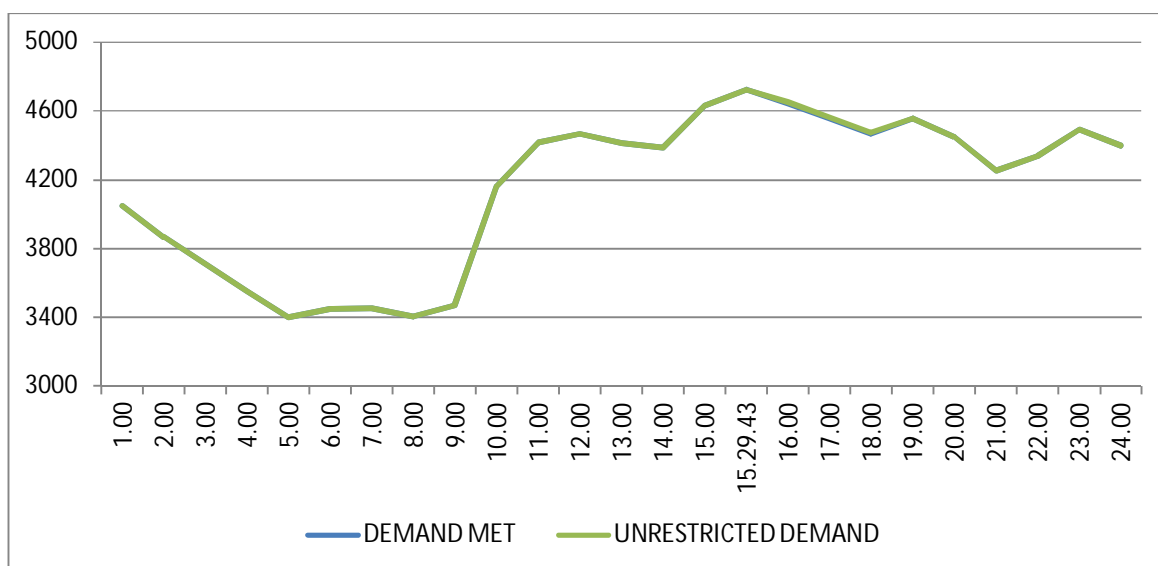
All figures in MW

Hrs.	Demand	Load Shedding	Un-Restricted Demand
1.00	4048	0	4048
2.00	3868	0	3868
3.00	3711	0	3711
4.00	3552	0	3552
5.00	3403	0	3403
6.00	3450	0	3450
7.00	3451	0	3451
8.00	3404	0	3404
9.00	3469	0	3469
10.00	4164	0	4164
11.00	4415	0	4415
12.00	4468	0	4468
13.00	4412	0	4412
14.00	4386	0	4386
15.00	4628	0	4628
15.29.43	4723	0	4723
16.00	4645	7	4652
17.00	4558	7	4565
18.00	4465	10	4475
19.00	4557	0	4557
20.00	4448	0	4448
21.00	4253	0	4253
22.00	4336	0	4336
23.00	4491	0	4491
24.00	4399	0	4399
Total (IN MUS)	101.667	0.205	101.872



12 LOAD PATTERN OF DELHI ON THE DAY OF MAXIMUM ENERGY CONSUMED DURING OCTOBER 2017 – 04.10.2017 – 101.667Mus All figures in MW

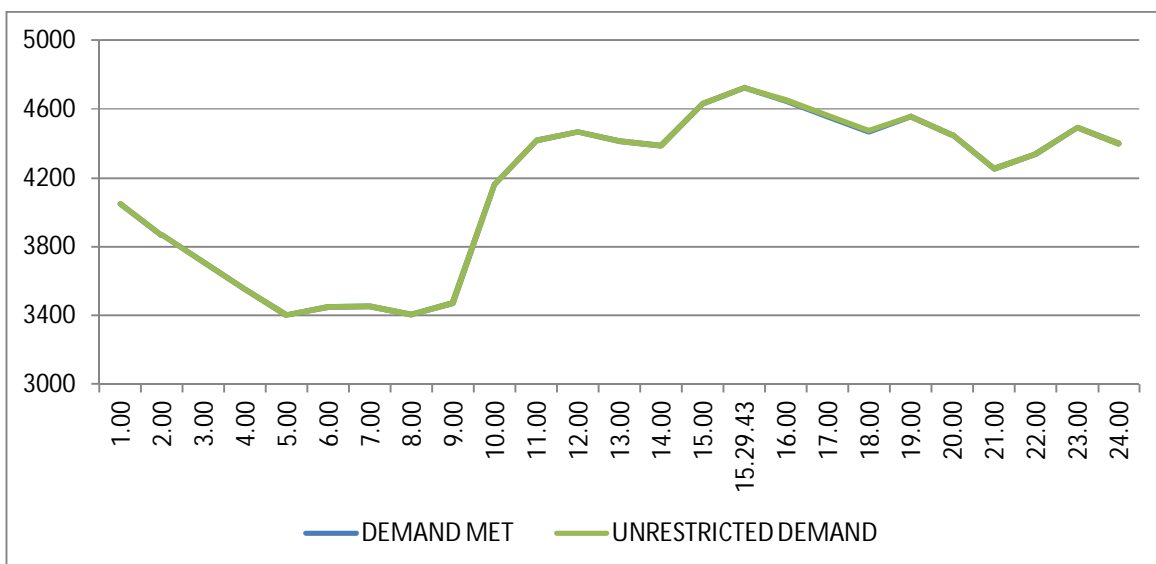
Hrs.	Demand	Load Shedding	Un-Restricted Demand
1.00	4048	0	4048
2.00	3868	0	3868
3.00	3711	0	3711
4.00	3552	0	3552
5.00	3403	0	3403
6.00	3450	0	3450
7.00	3451	0	3451
8.00	3404	0	3404
9.00	3469	0	3469
10.00	4164	0	4164
11.00	4415	0	4415
12.00	4468	0	4468
13.00	4412	0	4412
14.00	4386	0	4386
15.00	4628	0	4628
15.29.43	4723	0	4723
16.00	4645	7	4652
17.00	4558	7	4565
18.00	4465	10	4475
19.00	4557	0	4557
20.00	4448	0	4448
21.00	4253	0	4253
22.00	4336	0	4336
23.00	4491	0	4491
24.00	4399	0	4399
Total (IN MUS)	101.667	0.205	101.872



13 LOAD PATTERN OF DELHI ON THE DAY OF MAXIMUM UNRESTRICTED ENERGY DEMAND DURING OCTOBER 2017 – 04.10.2017 – 101.691 Mus

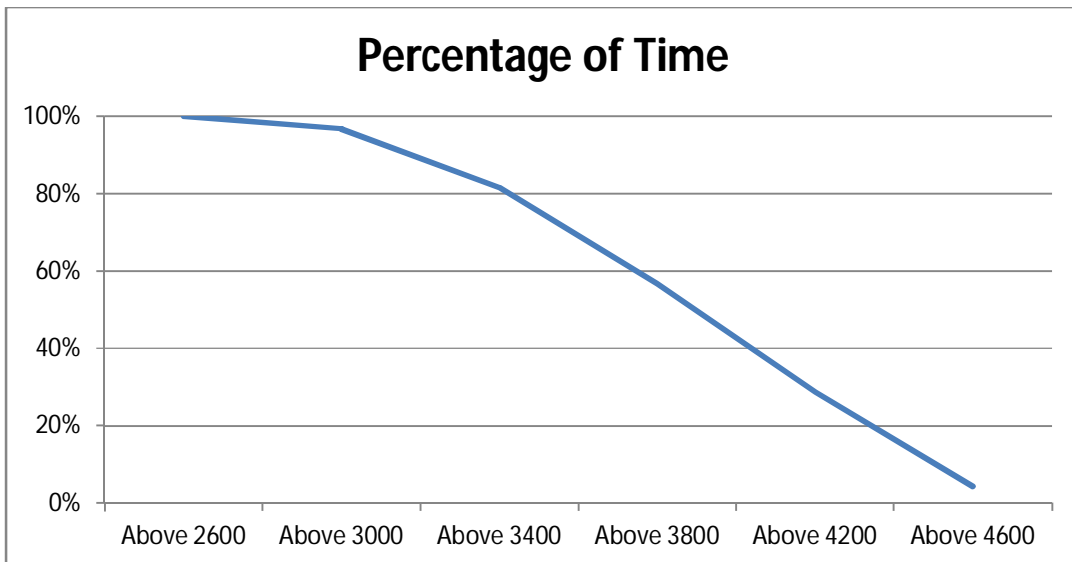
All figures in MW

Hrs.	Demand	Load Shedding	Un-Restricted Demand
1.00	4048	0	4048
2.00	3868	0	3868
3.00	3711	0	3711
4.00	3552	0	3552
5.00	3403	0	3403
6.00	3450	0	3450
7.00	3451	0	3451
8.00	3404	0	3404
9.00	3469	0	3469
10.00	4164	0	4164
11.00	4415	0	4415
12.00	4468	0	4468
13.00	4412	0	4412
14.00	4386	0	4386
15.00	4628	0	4628
15.29.43	4723	0	4723
16.00	4645	7	4652
17.00	4558	7	4565
18.00	4465	10	4475
19.00	4557	0	4557
20.00	4448	0	4448
21.00	4253	0	4253
22.00	4336	0	4336
23.00	4491	0	4491
24.00	4399	0	4399
Total (IN MUS)	101.667	0.205	101.872



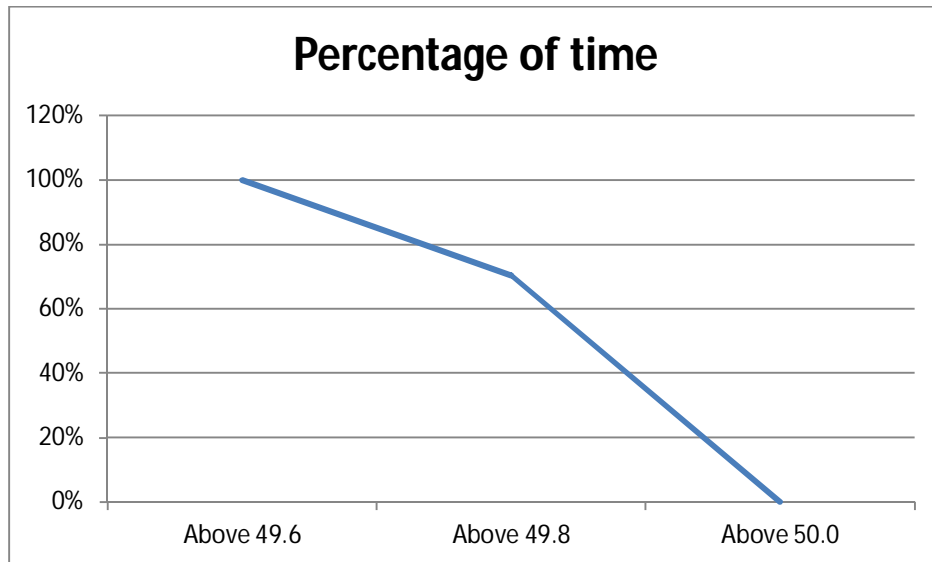
14 LOAD DURATION CURVE FOR OCTOBER 2017

Load in MW	Percentage of Time
Above 2600	93.11
Above 3000	79.00
Above 3400	55.48
Above 3800	32.56
Above 4200	18.41
Above 4200	0.54



FREQUENCY ANALYSIS FOR THE MONTH OF OCTOBER 2017

Frequency Range in Hz.	Percentage of time
Above 49.8	100.00
Above 50.00	70.36
Above 50.20	0.00



16 VOLTAGE PROFILE OF 220 KV SUB-STATIONS IN DELHI DURING OCTOBER 2017

All figures in kV

Date	NARELA		GAZIPUR	
	Max	Min	Max	Min
01.Oct.17	223.76	223.76	236.01	225.43
02.Oct.17	223.76	223.76	235.75	226.08
03.Oct.17	225.56	218.21	235.36	219.76
04.Oct.17	229.43	216.66	235.11	218.98
05.Oct.17	228.53	217.70	232.78	217.57
06.Oct.17	228.14	218.60	231.37	219.76
07.Oct.17	228.92	220.15	233.17	219.76
08.Oct.17	229.43	220.27	233.30	222.21
09.Oct.17	228.92	216.53	233.17	220.15
10.Oct.17	228.27	216.28	233.82	220.15
11.Oct.17	229.00	217.05	227.88	218.86
12.Oct.17	228.92	218.21	232.53	219.63
13.Oct.17	228.00	217.57	231.75	218.98
14.Oct.17	228.92	--	231.11	220.27
15.Oct.17	232.53	222.98	234.07	225.95
16.Oct.17	233.43	223.37	235.36	223.63
17.Oct.17	233.04	222.34	236.01	224.27
18.Oct.17	232.14	224.66	236.65	225.69
19.Oct.17	234.46	227.24	237.94	231.24
20.Oct.17	235.11	226.34	238.46	229.43
21.Oct.17	235.36	228.14	239.49	230.46
22.Oct.17	234.46	226.98	237.94	230.59
23.Oct.17	233.30	225.56	237.30	226.85
24.Oct.17	233.95	225.30	238.33	226.85
25.Oct.17	233.82	224.79	239.23	225.56
26.Oct.17	234.98	225.69	239.23	227.24
27.Oct.17	235.36	225.95	239.75	227.88
28.Oct.17	234.72	225.30	239.49	228.79
29.Oct.17	236.40	227.63	240.39	232.14
30.Oct.17	235.36	226.85	240.26	230.59
31.Oct.17	236.91	226.85	242.07	225.69

17 VOLTAGE PROFILE OF 400 KV SUB-STATIONS IN DELHI DURING OCTOBER 2017

All figures in kV

Date	400kV Bamnauli Grid Sub-Station				
	Max KV	Max Time	Min KV	Min Time	Average KV
01.Oct.17	412.70	08.02	395.81	19.10	403.84
02.Oct.17	409.88	17.32	396.28	00.15	404.11
03.Oct.17	411.29	06.35	394.41	18.24	401.82
04.Oct.17	410.12	03.56	393.23	18.27	402.50
05.Oct.17	410.82	06.16	--	06.35	343.91
06.Oct.17	408.01	06.50	390.42	18.32	399.60
07.Oct.17	412.70	06.03	392.06	18.26	401.84
08.Oct.17	413.63	06.03	396.99	18.28	406.08
09.Oct.17	412.46	03.29	393.23	18.29	402.81
10.Oct.17	412.46	04.00	391.59	18.39	401.67
11.Oct.17	403.79	20.51	389.01	18.30	396.90
12.Oct.17	411.06	04.01	392.06	18.38	402.86
13.Oct.17	411.29	04.00	393.47	18.10	403.37
14.Oct.17	411.06	04.00	380.81	10.19	403.58
15.Oct.17	412.46	08.02	399.10	18.13	406.76
16.Oct.17	414.57	03.59	396.05	18.31	405.37
17.Oct.17	413.17	04.02	394.88	18.26	404.20
18.Oct.17	413.40	03.07	394.64	11.54	405.78
19.Oct.17	416.68	14.03	403.79	18.19	411.32
20.Oct.17	415.98	06.45	402.14	18.11	410.88
21.Oct.17	417.86	04.00	403.32	18.34	411.06
22.Oct.17	415.51	03.01	402.61	18.10	410.18
23.Oct.17	413.40	04.33	399.33	09.41	406.42
24.Oct.17	412.70	21.35	398.16	09.45	405.42
25.Oct.17	415.98	22.00	396.28	10.28	406.80
26.Oct.17	416.21	04.00	397.22	11.39	407.96
27.Oct.17	412.92	04.00	397.92	11.29	408.20
28.Oct.17	415.04	04.00	398.39	18.11	408.23
29.Oct.17	417.15	20.58	399.57	11.38	409.63
30.Oct.17	415.04	04.00	400.27	18.11	408.90
31.Oct.17	417.15	04.00	400.27	11.36	408.51

All figures in kV

Date	400kV Bawana Grid Sub-Station				
	Max KV	Max Time	Min KV	Min Time	Average KV
01.Oct.17	416.21	08.01	399.57	19.14	408.08
02.Oct.17	412.46	06.59	400.50	19.07	407.85
03.Oct.17	415.21	05.46	396.39	14.43	405.92
04.Oct.17	413.40	03.38	394.64	18.27	405.56
05.Oct.17	411.99	06.01	396.75	11.14	403.59
06.Oct.17	411.06	05.33	398.83	11.54	404.43
07.Oct.17	412.46	06.01	397.92	18.21	404.93
08.Oct.17	412.70	05.45	399.80	18.39	407.64
09.Oct.17	412.70	04.01	394.64	18.28	404.49
10.Oct.17	411.06	04.00	393.70	18.36	403.00
11.Oct.17	408.48	13.25	393.94	18.22	399.49
12.Oct.17	413.17	04.05	395.81	18.36	405.87
13.Oct.17	410.12	03.57	396.75	18.10	405.82
14.Oct.17	410.12	21.56	--	11.06	397.90
15.Oct.17	415.04	21.47	399.57	18.13	409.41
16.Oct.17	419.03	05.12	402.14	18.30	411.26
17.Oct.17	417.15	02.56	399.57	18.32	409.39
18.Oct.17	1414.81	03.06	404.02	18.43	410.22
19.Oct.17	418.32	14.03	407.30	18.19	413.44
20.Oct.17	419.50	06.47	406.37	18.07	414.31
21.Oct.17	421.37	01.21	408.94	12.05	415.16
22.Oct.17	417.86	02.59	409.58	18.26	413.95
23.Oct.17	419.03	21.12	406.60	18.39	412.50
24.Oct.17	416.92	21.55	405.43	11.40	410.84
25.Oct.17	419.73	21.58	404.02	11.19	411.73
26.Oct.17	420.90	21.43	406.37	12.13	413.84
27.Oct.17	420.20	21.40	405.66	11.29	413.29
28.Oct.17	419.26	20.56	405.19	18.12	414.45
29.Oct.17	422.55	20.59	407.77	09.52	414.70
30.Oct.17	420.67	20.59	406.83	18.13	415.12
31.Oct.17	421.84	04.00	407.30	12.11	414.79

18 DETAILS OF LUMPED CAPACITORS AT NEAREST 220 KV SUBSTATION

SI. No	SUB-STATION	INSTALLED CAPACITY			
		66KV	33kV	11kV	TOTAL
1	IP YARD		30.00		30.00
1	Kamla Market			16.35	16.35
2	Minto Road				0.00
3	GB Pant Hosp			10.48	10.48
4	Delhi Gate			16.30	16.30
5	Tilakmarg			5.04	5.04
7	Cannaught Place			10.08	10.08
8	Kilokri		10.08	10.48	20.56
9	NDSE-II				0.00
11	Nizamuddin				0.00
12	Exhibition-I				0.00
13	Exhibition-II				0.00
14	Defence Colony				0.00
15	IG Stadium		10.08	5.45	15.53
16	Lajpat Nagar				0.00
17	IP Estate			10.90	10.90
18	D.D.U.Marg			21.60	21.60
		0.00	50.16	106.68	156.84
2	Electric Lane				
1	Electric Lane			5.04	5.04
2	Scindia House			10.44	10.44
3	Mandi House			10.80	10.80
4	Raisina Road			10.08	10.08
5	Raja Bazar			10.08	10.08
		0.00	0.00	46.44	46.44
3	RPH Station		20.00		20.00
1	Lahori Gate			10.49	10.49
2	Jama Masjid			10.48	10.48
4	Kamla Market				0.00
5	Minto Road			10.90	10.90
6	GB Pant Hosp				0.00
7	IG Stadium				0.00
		0.00	20.00	31.87	51.87
4	Parkstreet S/stn	20.00	20.00		40.00
1	Shastri Park		0.00	5.45	5.45
2	Faiz Road			18.05	18.05
3	Motia Khan			16.30	16.30
4	Prasad Nagar			16.25	16.25
5	Anand Parbat			10.80	10.80
6	Shankar Road			10.44	10.44
7	Rama Road			0.00	0.00
8	Baird Road			10.08	10.08
9	Hanuman Road			10.08	10.08
10	Pusa			5.44	5.44
11	Ridge Valley			0.00	0.00
12	B. D. Marg			5.40	5.40
13	Nirman Bhawan			5.04	5.04
		20.00	20.00	113.33	153.33
5	Naraina S/stn		20.00	5.04	25.04
1	DMS			10.85	10.85
2	Mayapuri		10.87	10.40	21.27
3	Inderpuri		13.26	5.04	18.30
4	Rewari line				0.00
5	Khyber Lane		10.05		10.05
6	Kirbi Place		10.05		10.05
7	Payal			10.08	10.08
8	A-21 Naraina			4.80	4.80
8	Saraswati Garden			10.08	10.08
		0.00	64.23	56.29	120.52

SI. No	SUB-STATION	INSTALLED CAPACITY			
		66KV	33kV	11kV	TOTAL
6	Mehrauli S/stn	80.00		5.04	85.04
1	Adchini			14.61	14.61
2	Andheria Bagh			10.85	10.85
3	IIT			10.90	10.90
4	JNU		10.03	10.03	20.06
5	Bijwasan			15.47	15.47
6	DC Saket		10.08	9.98	20.06
7	Malviya Nagar				0.00
8	C Dot			17.68	17.68
9	Vasant kunj B-Blk	21.79		10.90	32.69
10	Vasant kunj C-Blk	20.16		10.48	30.64
11	Palam				0.00
12	IGNOU			14.54	14.54
13	R. K. Puram-I			10.07	10.07
14	Vasant Vihar			19.25	19.25
15	Pusp Vihar			10.44	10.44
16	Bhikaji Cama Place		10.08	10.07	20.15
		121.95	30.19	180.31	332.45
7	Vasantkunj S/stn	40.00		5.04	45.04
1	R. K. Puram-II			10.80	10.80
2	Vasant kunj C-Blk				0.00
3	Vasant kunj D-Blk			9.63	9.63
4	Ridge Valley				0.00
		40.00	0.00	25.47	65.47
8	Okhla S/stn	60.00	10.00	5.04	75.04
1	Balaji			10.80	10.80
2	East of Kailash			15.89	15.89
3	Alaknanda			16.30	16.30
4	Malviya Nagar	21.79	20.16	10.85	52.80
5	Masjid Moth			16.30	16.30
6	Nehru Place			21.34	21.34
7	Okhla Ph-I	21.79		16.30	38.09
8	Okhla Ph-II		20.93	15.47	36.40
9	Shivalik			10.80	10.80
10	Batra			15.90	15.90
11	VSNL			10.90	10.90
12	Siri Fort			10.49	10.49
13	Tuglakabad			18.05	18.05
		103.58	51.09	194.43	349.10
9	Lodhi Road S/stn			20.00	20.00
1	Defence Colony			14.85	14.85
2	Hudco			10.90	10.90
3	Lajpat Nagar			10.90	10.90
4	Nizamuddin			10.44	10.44
5	Vidyut Bhawan (Shahjahan Rd)			10.80	10.80
6	Ex. Gr. II			0.00	0.00
7	IHC			0.00	0.00
		0.00	0.00	77.89	77.89
10	Sarita Vihar S/stn	20.00		5.04	25.04
1	Sarita Vihar			10.07	10.07
2	MCIE			10.06	10.06
3	Mathura Road	20.16		11.69	31.85
4	Jamia Millia			10.89	10.89
5	Sarai Julena		10.08	16.29	26.37
6	Jasola			5.44	5.44
		40.16	10.08	69.48	119.72

SI. No	SUB-STATION	INSTALLED CAPACITY			
		66KV	33kV	11kV	TOTAL
11	Wazirabad				
1	Bhagirathi		14.40	18.10	32.50
2	Ghonda	0.00	22.56	15.94	38.50
3	Seelam Pur		10.08	21.39	31.47
4	Dwarkapuri			15.46	15.46
5	Nandnagri	20.16		16.35	36.51
6	Yamuna Vihar			14.40	14.40
7	East of Loni Road			18.00	18.00
8	Shastri Park			10.90	10.90
9	Karawal Nagar			5.40	5.40
10	Sonia Vihar			14.70	14.70
		20.16	47.04	150.64	217.84
12	Geeta Colony				
1	Geeta Colony			10.49	10.49
2	Kanti Nagar			18.10	18.10
3	Kailash Nagar			15.48	15.48
4	Seelam Pur				0.00
5	Shakar Pur			10.80	10.80
		0.00	0.00	54.87	54.87
13	Gazipur S/stn	40.00		5.04	45.04
1	Dallupura	0.00		10.90	10.90
2	Vivek Vihar			9.57	9.57
3	GT Road			10.85	10.85
4	Kondli	20.16		10.85	31.01
5	MVR-I			10.90	10.90
6	MVR-II	20.16		10.44	30.60
7	PPG Ind. Area			10.06	10.06
8	New Kondli			21.60	21.60
		80.32	0.00	100.21	180.53
14	Patparganj S/stn	40.00	20.00	5.04	65.04
1	GH-I	19.89		21.25	41.14
2	GH-II	20.09		10.90	30.99
3	CBD		10.03	15.48	25.51
4	Guru Angad Nagar			15.49	15.49
5	Karkadooma		10.80	10.44	21.24
6	Preet Vihar			10.07	10.07
7	CBD-II			10.80	10.80
8	Shakarpur				0.00
9	Jhilmil			10.80	10.80
10	Dilshad Garden	20.16		16.35	36.51
11	Khichripur	21.79		15.89	37.68
12	Mother Dairy				0.00
13	Scope Building				0.00
14	Vivek Vihar				0.00
15	Akhardham			14.60	14.60
		121.93	40.83	157.11	319.87
15	Najafgarh S/stn	60.00		5.04	65.04
1	A4 Paschim Vihar			10.80	10.80
2	Nangloi	21.73		15.84	37.57
3	Nangloi W/W	20.89		10.85	31.74
4	Pankha Road			15.88	15.88
5	Jaffarpur			26.23	26.23
7	Inst. Area Janakpuri (Sagarpur)			17.60	17.60
8	Paschimpuri		10.05	15.47	25.52
9	Paschim Vihar	41.83		15.43	57.26
10	Mukherjee Park			20.83	20.83
11	Udyog Nagar			10.43	10.43
12	Choukhandi			10.07	10.07
13	DJB Najafgarh			21.60	21.60
		144.45	10.05	196.07	350.57

Sl. No	SUB-STATION	INSTALLED CAPACITY			
		66KV	33kv	11kv	TOTAL
16	Pappankalan-I S/stn	20.00		5.04	25.04
1	Bindapur Grid G-3 PPK	21.73		15.85	37.58
2	Bodella-I	20.10		16.24	36.34
3	Bodella-II	21.73		17.64	39.37
4	DC Janakpuri			10.03	10.03
5	G-2 PPK (Nasirpur)			16.20	16.20
6	G-5 PPK (Matiala)			22.71	22.71
7	G-6 PPK			12.60	12.60
8	G-15 PPK			10.80	10.80
9	Harinagar	21.18		16.25	37.43
10	Rewari line			5.44	5.44
		104.74	0.00	148.80	253.54
17	BBMB Rohtak Road				
1	S.B. Mill			10.07	10.07
2	Rama Road			10.88	10.88
3	Ram Pura			10.48	10.48
4	Rohtak Road			10.08	10.08
5	Vishal			10.40	10.40
6	Madipur			10.43	10.43
7	Sudershan Park			10.08	10.08
8	Kirti Nagar			5.44	5.44
		0.00	0.00	77.86	77.86
18	Shalimarbagh S/stn		40.00	6.00	46.00
1	S.G.T. Nagar			5.44	5.44
2	Ashok Vihar			0.00	0.00
3	Haiderpur			11.39	11.39
4	SMB FC			12.64	12.64
5	Rani Bagh			5.44	5.44
6	SMB KHOSLA			5.44	5.44
		0.00	40.00	46.35	86.35
19	Subzimandi S/stn			6.00	6.00
1	Shakti Nagar			5.04	5.04
2	Gulabibagh			10.88	10.88
3	Shahzadabagh			15.79	15.79
4	DU			5.44	5.44
5	Tripolia			10.88	10.88
6	B. G. Road			5.40	5.40
		0.00	0.00	59.43	59.43
20	Narela S/stn	40.00		5.04	45.04
1	A-7 Narela			10.88	10.88
2	Azad Pur			5.44	5.44
3	Badli	20.00		5.95	25.95
4	DSIDC Narela-1			5.95	5.95
5	GTK			5.94	5.94
6	Jahangirpuri	20.00	10.00	0.00	30.00
7	Bhalswa			12.64	12.64
8	Pitampura-I	20.00		5.04	25.04
9	RG-1			5.44	5.44
		100.00	10.00	62.32	172.32

SI. No	SUB-STATION	INSTALLED CAPACITY			
		66KV	33KV	11KV	TOTAL
21	Gopalpur S/stn		30.00	5.04	35.04
1	Hudson Lane			5.95	5.95
2	Wazirabad			7.20	7.20
3	Indra Vihar			5.95	5.95
4	DIFR			5.44	5.44
5	GTK Road			5.44	5.44
6	Jahangirpuri		10.00	5.95	15.95
7	Civil lines			7.20	7.20
8	Pitam Pura-3			5.44	5.44
9	SGT Nagar			13.15	13.15
10	Tiggipur			10.88	10.88
11	Model Town			14.40	14.40
12	Azad Pur			5.44	5.44
13	Dheerpur			14.40	14.40
		0.00	40.00	111.88	151.88
22	Rohini S/stn	40.00		6.00	46.00
1	Rohini Sec-22			18.08	18.08
2	Rohini Sec-24			5.44	5.44
3	Rohini-3			5.95	5.95
4	Rohini-4			11.39	11.39
5	Rohini-5			11.39	11.39
6	Rohini-6			0.00	0.00
7	Mangolpuri-2	20.00		7.20	27.20
8	Pitam Pura-1			5.44	5.44
9	Pitam Pura-2			10.48	10.48
10	Rohini DC-1			14.40	14.40
11	AIR Kham pur			11.90	11.90
		60.00	0.00	107.67	167.67
23	Kanjhawala S/stn	20.00		5.04	25.04
1	Bawana Clear Water			14.30	14.30
2	Pooth Khoord	20.00		5.44	25.44
4	Rohini -2			13.15	13.15
		40.00	0.00	37.93	77.93
24	BAWANA S/stn				
1	Bawana S/stn No. 6			10.88	10.88
2	Bawana S/stn No. 7			7.20	7.20
		0.00	0.00	18.08	18.08
25	Kashmerigate S/stn			5.04	5.04
1	Civil lines			7.20	7.20
2	Town Hall			8.64	8.64
3	Fountain			5.45	5.45
		0.00	0.00	26.33	26.33
26	Pappankalan-II				
1	DMRC				0.00
2	HASTAL			21.60	21.60
3	GGSH			10.80	10.80
4	66KV G-4			21.60	21.60
		0.00	0.00	54.00	54.00
27	Trauma Center (AIIMS)				
1	AIIMS		13.26	5.04	18.30
2	Trauma Center			10.08	10.08
3	Netaji Nagar			15.12	15.12
4	Sanjay Camp			10.08	10.08
5	Kidwai Nagar			10.08	10.08
6	SJ Airport			5.04	5.04
7	Race Course			10.44	10.44
		0.00	13.26	65.88	79.14

SI. No	SUB-STATION	INSTALLED CAPACITY			
		66KV	33KV	11kV	TOTAL
28	MUNDKA				
1	Mangolpuri-I			20.35	20.35
2	Rohini Sec-23	20.00		12.64	32.64
3	66kV Mundka			21.60	21.60
		20.00	0.00	54.59	74.59
29	DSIDC BAWANA				
1	DSIDC NRL-1	0.00			0.00
2	DSIDC NRL-2			16.32	16.32
3	Bawana Clear Water			7.30	7.30
4	Bawana-1			0.00	0.00
		0.00	0.00	23.62	23.62
30	RIDGE VALLEY				
1	Keventry Diary			10.08	10.08
2	Nehru Park			5.04	5.04
3	State Guest House			5.40	5.40
4	Bapu Dham			15.48	15.48
5	66kV Vasant Kunj Inst. Area			21.60	21.60
		0.00	0.00	57.60	57.60
31	IP EXTN (PRAGATI)				
1	Vidyut Bhawan			10.08	10.08
2	Dalhousie Road			5.04	5.04
3	National Archives			10.08	10.08
4	School Lane			10.44	10.44
		0.00	0.00	35.64	35.64
32	Wazirpur				
1	Tri Nagar			10.88	10.88
2	Wazirpur-1			17.18	17.18
3	Wazirpur-2			13.20	13.20
4	Ashok vihar			17.80	17.80
5	Azad Pur			5.44	5.44
6	GTK			4.80	4.80
		0.00	0.00	69.30	69.30
33	Peeragarhi				
1	Rani Bagh			5.44	5.44
2	Rani Bagh cc			9.60	9.60
		0.00	0.00	15.04	15.04
34	Rohini-II				
1	Rohini-6			13.15	13.15
2	Siraspur			7.20	7.20
		0.00	0.00	20.35	20.35

Utility	HT	LT	Total
BYPL	905.23	102.00	1007.23
BRPL	1308.19	242.00	1550.19
TPDDL	830.90	119.00	949.90
NDMC	259.86	24.00	283.86
DTL	753.52	0.00	753.52
IPGCL (RPH)	20.00	0.00	20.00
MES	20.10	0.00	20.10
TOTAL	4097.80	487.00	4584.80

20 DETAILS OF BREAK-DOWNS DURING THE MONTH OF OCTOBER 2017

SL NO	OCCURRENCE OF BREAK-DOWN		DETAILS OF THE BREAKDOWN	TIME OF RESTORATION		REMARKS
	DATE	TIME		DATE	TIME	
1	1.10.17	09:40	PAPPANKALAN-I 220/66KV 160MVA Tx-5	1.10.17	10:25	I/C TRIPPED WITHOUT INDICATION.
2	1.10.17	09:40	PAPPANKALAN-I 220/66KV 100MVA Tx-IV	1.10.17	10:25	TRIPPED ON 80A&B, I/C TRIPPED ON O/C, E/F.
3	1.10.17	11:32	220kV GAZIPUR - BTPS CKT	1.10.17	17:30	AT BTPS : DIST PROT, ZONE-I, DIST 17.2KM, E/F, R PHASE.
4	2.10.17	07:22	220kV BAMNAULI-NARAINA CKT-I	2.10.17	08:00	AT NARAINA : DIST PROT, 86A, DIFFERENTIAL TRIP. AT BAMNAULI : DIST PROT, ZONE-I, DIST 11.39KM.
5	2.10.17	09:01	GEETA COLONY 220/33kV 100MVA Tx-II	2.10.17	14:13	TRIPPED ON 86, BUCHOLZ.
6	2.10.17	12:22	220kV MEHRAULI - BTPS CKT. - II	2.10.17	14:03	AT MEHRAULI : DIST PROT, ZONE-I, DIST 7.396KM. AT BTPS : DIST PROT, ZONE-I, DIST 14.4KM.
7	2.10.17	12:33	220kV GAZIPUR - BTPS CKT	2.10.17	18:52	AT BTPS : DIST PROT, ZONE-I, DIST 15.7KM.
8	2.10.17	12:58	220kV GOPALPUR- MANDOLACKT-I	2.10.17	15:44	AT GOPALPUR : DIST PROT, DIST 3.292KM., AT MANDOLA : DIST PROT, DIST 20.7KM.
9	3.10.17	13:58	220kV BAMNAULI-NARAINA CKT-II	3.10.17	14:32	AT BAMNAULI : DIST PROT, ZONE-I, DIST 6.186KM. AT NARAINA : A PHASE DIFFERENTIAL.
10	4.10.17	12:06	KANJHAWALA 66/11kV, 20MVA Tx-II	4.10.17	12:24	TRIPPED ON 86.
11	5.10.17	13:27	220kV MEHRAULI - VASANT KUNJ CKT.- II	5.10.17	16:40	AT MEHRAULI : DIST PROT, ZONE-I, DIST 17.19KM.
12	7.10.17	04:07	220kV MEHRAULI - BTPS CKT. - I	7.10.17	17:16	AT MEHRAULI : DIST PROT, ZONE-I, DIST 14.49KM. AT BTPS DIST PROT, ZONE-I, DIST 3KM.
13	8.10.17	07:35	OKHLA 220/33kV 100MVA Tx-IV	8.10.17	15:05	TRIPPED ON 86.
14	8.10.17	11:24	220kV GAZIPUR - BTPS CKT	8.10.17	15:05	AT BTPS : DIST PROT ZONE-I, DIST 10.2KM.
15	9.10.17	03:58	220kV BAMNAULI-PAPPANKALAN-I CKT-I	9.10.17	08:16	AT PAPPANKALAN-I : POLE DISCREPANCY. AT BAMNAULI : CKT DID NOT TRIPPED.
16	9.10.17	13:09	220kV BAMNAULI - DIAL CKT-I	9.10.17	15:05	AT DIAL : TRIPPED ON GEN TRIP, LINE DIFFERENTIAL. AT BAMNAULI : DIST PROT, R PHASE, 186A&B.
17	11.10.17	01:15	MEHRAULI 220/66kV 100MVA Tx-III	11.10.17	01:17	I/C TRIPPED ON O/C, E/F.
18	11.10.17	01:15	MEHRAULI 220/66kV 100MVA Tx-I	11.10.17	01:17	I/C TRIPPED ON O/C, E/F.
19	12.10.17	09:45	220kV MEHRAULI - BTPS CKT. - I	12.10.17	10:13	AT BTPS : DIST PROT, ZONE-I, DIST 2.0KM, E/F. AT MEHRAULI : DIST PROT. ZONE-II, DIST 15.14KM, ACTIVE GROUP-I, TRIP PHASE ABC.
20	13.10.17	11:36	220kV DIAL- MEHRAULI CKT-II	13.10.17	13:25	AT DIAL : LINE DIFFERENTIAL, GEN TRIP. AT MEHRAULI : 186, 186
21	13.10.17	12:42	220kV MEHRAULI - BTPS CKT. - I	13.10.17	15:50	AT MEHRAULI : DIST PROT, ZONE-I, DIST 13.15KM. AT BTPS : DIST PROT, ZONE-I, DIST 3.9KM, E/F.
22	14.10.17	05:55	NAJAFGARH 66/11kV, 20MVA Tx-II	14.10.17	09:05	TRIPPED ON BUCHHOLZ RELAY.

SL NO	OCCURRENCE OF BREAK-DOWN		DETAILS OF THE BREAKDOWN	TIME OF RESTORATION		REMARKS
	DATE	TIME		DATE	TIME	
23	14.10.17	09:30	400kV Dadri - Harsh Vihar Ckt. -II	14.10.17	10:17	AT HARSH VIHAR, DIST PROT, ZONE-I, R PHASE, 86, E/F. AT DADRI CKT. DID NOT TRIP.
24	14.10.17	10:18	BAWANA 400/220kV 315MVA ICT-VI	14.10.17	12:20	I/C TRIPPED ON AUTO TRIP.
25	14.10.17	10:18	BAWANA 400/220kV 315MVA ICT-V	14.10.17	12:25	I/C TRIPPED ON AUTO TRIP.
26	14.10.17	10:18	BAWANA 400/220kV 315MVA ICT-IV	14.10.17	12:57	I/C TRIPPED ON AUTO TRIP.
27	14.10.17	10:18	BAWANA 400/220kV 315MVA ICT-II	14.10.17	11:38	86, 186A&B.
28	14.10.17	10:18	BAWANA 400/220kV 315MVA ICT-I	14.10.17	12:03	I/C TRIPPED ON AUTO TRIP.
29	14.10.17	10:18	BAWANA 400/220kV 315MVA ICT-III	14.10.17	11:28	86, 186A&B.
30	16.10.17	17:19	220kV GAZIPUR - BTPS CKT	16.10.17	19:51	AT BTPS : DIST PROT, ZONE-I, DIST 17.1KM, E/F.
31	17.10.17	15:28	220kV MAHARANIBAGH-MASJID MOTH CKT-II	17.10.17	15:40	AT MAHARANI BAGH : TRIPPED WITHOUT INDICATION. AT MASJID MOTH : CKT. DID NOT TRIP.
32	17.10.17	15:40	220kV WAZIRABAD - KASHMERE GATE CKT-I	17.10.17	15:41	AT KASHMIRI GATE : TRIPPED DURING TESTING BY PROT, DEPTT.
33	17.10.17	15:51	220kV MAHARANIBAGH-MASJID MOTH CKT-II	17.10.17	18:05	AT MAHARANI BAGH : TRIPPED WITHOUT INDICATION. AT MASJID MOTH : CKT. DID NOT TRIP.
34	17.10.17	19:27	220kV MUNDKA-NAJAFGARH CKT	18.10.17	14:53	AT MUNDKA : TRIPPED WITHOUT INDICATION. AT NAJAFGARH : CKT. DID NOT TRIP.
35	18.10.17	03:18	BAMNAULI 400/220kV 500MVA ICT-III	18.10.17	09:20	TRIPPED WITHOUT INDICATION.
36	18.10.17	13:02	220kV ROHINI-SHALIMARBAGH CKT-I	18.10.17	17:21	AT ROHINI : DIST PROT, ZONE-I, RB PHASE.
37	18.10.17	22:03	220kV BAMNAULI-PAPPANKALAN-II CKT-II	18.10.17	22:29	AT PAPAN KALAN-II : TRIPPED ON DIST PROT, ZONE-I, CN PHASE.
38	19.10.17	10:24	220kV GAZIPUR - BTPS CKT	19.10.17	13:59	AT BTPS : TRIPPED ON DIST PROT, ZONE-I, DIST 14.7KM.
39	19.10.17	22:45	220kV BAMNAULI-PAPPANKALAN-I CKT-I	20.10.17	11:12	AT PAPAN KALAN-I : TRIPPED ON PD AT BAMNAULI : CKT .DID NOT TRIPPED.
40	20.10.17	16:55	OKHLA 66/11kV, 20MVA Tx-II	20.10.17	21:05	TR. TRIPPED ON R&B PHASE , O/C ALONG WITH 11KV ALAKHNANDA, A-12 S/STN, A-8 S/STN, TARA APPT, GOVINDPURI S/STN.
41	21.10.17	13:03	INDRAPRASTHA POWER 220/33kV 100MVA Tx-I	21.10.17	13:25	I/C-I TRIPPED ON O/C.
42	21.10.17	13:03	INDRAPRASTHA POWER 220/33kV 100MVA Tx-II	21.10.17	13:25	TR. TRIPPED WITHOUT INDICATION .
43	22.10.17	02:56	INDRAPRASTHA POWER 220/33kV 100MVA Tx-III	22.10.17	18:15	TRIPPED ON 186, 186A.
44	22.10.17	14:26	220kV NARELA - MANDOLA CKT-I	22.10.17	14:28	AT NARELA : DIST PROT, DIST 4.082KM, 86A.

SL NO	OCCURRENCE OF BREAK-DOWN		DETAILS OF THE BREAKDOWN	TIME OF RESTORATION		REMARKS
	DATE	TIME		DATE	TIME	
45	24.10.17	06:48	INDRAPRASTHA POWER 220/33kV 100MVA Tx-II	24.10.17	11:20	DIFFERENTIAL.
46	24.10.17	17:41	NARELA 66/33kV, 30MVA Tx	25.10.17	00:45	I/C TRIPPED ON E/F ALONGWITH 33KV AIR KHAMPUR FEEDER.
47	25.10.17	10:18	PAPPANKALAN-I 66/11kV, 20MVA Tx-I	25.10.17	11:02	TR. TRIPPED ON 86, 51AB ALONGWITH 2NOS 11KV FEEDER, NCID & BANGALI COLLONY WHICH TRIPED ON E/F.
48	25.10.17	18:43	OKHLA 66/11kV, 20MVA Tx-II	25.10.17	22:17	TR. TRIPPED ON O/C, E/F, R&B PHASE, I/C TRIPPED ON O/C, E/F. WITH FLASH IN 11KV BUS SECTION.
49	26.10.17	02:41	400kV Ballabgharh-Bamnauli Ckt-I	26.10.17	06:40	AT BAMNAULI : CKT. TRIPPED ON 186A&B, DIST PROT, ZONE-I, DIST 32KM.
50	27.10.17	14:53	220kV MEHRAULI - BTPS CKT. - II	27.10.17	18:17	AT BTPS : DIST PROT, DIST 7.1KM, E/F. AT MEHRAULI : DIST PROT, TRIP PHASE ABC.
51	28.10.17	12:38	220kV MAHARANI BAGH - PRAGATI CKT	28.10.17	15:22	AT PRAGATI : DIST PROT, ZONE-I, DIST 3.545KM, E/F. AT MAHARANI BAGH : DIST PROT, ZONE-I, II, DIST 3.9KM.
52	28.10.17	16:54	220kV BAMNAULI-PAPPANKALAN-I CKT-I	28.10.17	21:15	AT PAPPANKALAN-I : DIST PROT, DIFFERENTIAL AT BAMNAULI : DIST PROT, DIST 2.137KM.
53	29.10.17	17:25	220KV WAZIRABAD - MANDOLA CKT-I	30.10.17	12:07	AT WAZIRABAD : DIST PROT, ZONE-I, II & III, DIST 8.338KM. AT MANDOLA : DIST PROT, DIST 6.09KM.
54	31.10.17	02:52	MASJID MOTH 220/33kV 100MVA Tr-III	31.10.17	13:10	TRIPPED ON OVER FLUX, 86-1, 86-2.
55	31.10.17	05:55	220kV Preet Vihar- Patparganj Ckt-II	31.10.17	07:31	AT PREET VIHAR : DIST POT, DIST 6.80KM. AT PATPARGANJ : CKT. DID NOT TRIP.
56	31.10.17	22:24	220kV BAMNAULI-PAPPANKALAN-II CKT-II	31.10.17	22:39	AT PAPPANKALAN-2 : DIST PROT, ZONE-I. AT BAMNAULI : CKT. DID NOT TRIP.

20 DETAILS OF UNDER FREQUENCY RELAY OPERATIONS IN DELHI POWER SYSTEM DURING THE MONTH OF OCTOBER 2017

DATE	S. N.	TIME		Name of Grid	NAME OF AFFECTED FEEDERS	MODE	LOAD RELIEF IN MW
		OUT	IN				
				NIL			